

2019 YEAR IN REVIEW
O T R





From the Editor

Putting together this *Year in Review* makes me realize that this town, Whitchurch-Stouffville, did a lot of great things over the past 12 months. These 24 pages capture those accomplishments and will help preserve those memories for a very long time.

As I look back on 2019 in Whitchurch-Stouffville, many great things stand out. But one in particular stands head and shoulders above the rest: the "Archeology Alive!" exhibit at the Whitchurch-Stouffville Museum and Community Centre.

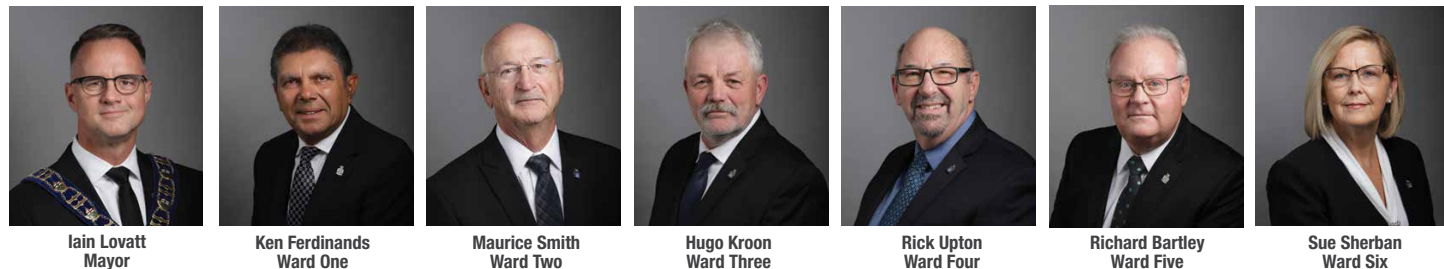
It is not every day a community can say they were once home to a vast, 2000-person indigenous village, one of the largest in northeastern North America. We should be proud to have such heritage and kudos to the Museum for commemorating that in its new exhibit (see page 3).

Also in this *Review*, you will find out about our new innovative ways we are encouraging the public to participate in making this community better; the role the Rouge National Urban Park is playing in helping people recognize the importance of the environment, and what developments are coming soon.

Mayor Iain Lovatt and the rest of Council also offer their take on the past 12 months focusing on accomplishments in their wards.

Glenn Jackson, Editor | glenn.jackson@townofws.ca

2018-2022 Whitchurch-Stouffville Council:



- 4 COMMUNITY SNAPSHOT**
Whitchurch-Stouffville's demographics have changed a lot over the past few years and no doubt they will continue to change. Our Community Snapshot shows our population as it stands in 2019.
- 8 INNOVATION & COLLABORATION**
Great things happen when people think outside the box. And that is just what the Town has been doing in 2019 to fulfill our commitment to you, our citizens.
- 12 BUILDING FOR FUTURE GENERATIONS**
Over 35 applications were received in 2019 to build new housing developments, subdivisions and retail plazas. We continue to accommodate everyone that wishes to call Whitchurch-Stouffville home.
- 14 PRESERVING OUR ENVIRONMENT**
The Rouge National Urban Park highlights a year of tremendous environmental accomplishments. The York Region forests and our many trails continue to draw users from all over the area.
- 18 MAKING A LIVING**
Whitchurch-Stouffville has a very diverse local economy and we are looking to expand that everyday. Recent decisions regarding cannabis retail stores and development in Gormley, will play large roles in the future.
- 22 CARING FOR ALL GENERATIONS**
We are blessed to have a well rounded mix of generations living in Whitchurch-Stouffville. Our 55+ Club and the ABLE Network continue to grow and help citizens enjoy the life they wish to lead.



2019 HIGHLIGHT

16th century Whitchurch-Stouffville relived at Museum

The Jean-Baptiste Lainé Site was home to a remarkable late 16th century ancestral Wendat community. The site was uncovered in a farmer's field during preparations for the construction of a subdivision just southeast of downtown Stouffville (immediately west of Byers Pond Way and southwest of Lost Pond Crescent near Wendat Public School). Covering almost 7 acres, the Site was excavated by a team of 10 archaeologists from Archaeological Services Inc. between 2003 – 2005. Based on the complexity of the site and the historical significance of the artifacts uncovered, they are now housed at the Canadian Museum of History in Gatineau, Quebec.

In March 2018, the Town requested support from the Huron-Wendat Nation in the development of an exhibit at the Whitchurch-Stouffville Museum & Community Centre. In June of 2019, the exhibit opened to the public and showcased the history of the Huron-Wendat in Whitchurch-Stouffville. Entitled "Archeology Alive: The Jean-Baptiste Lainé Site in Whitchurch-Stouffville," it focuses on the archaeological discoveries and what each item can tell us about the Huron-Wendat who lived here in the late 16th Century.

The exhibition features 100 artifacts on loan from the Canadian Museum of History, as well as artifacts from the Huron-Wendat Museum located in Wendake, Quebec. Additionally, a

variety of engaging interpretive techniques have been used, including audio-visual components and a virtual longhouse experience.

The exhibition runs until June 2020. The Museum is located in Vandorf on Woodbine Avenue.

Community Snapshot

Earlier this year, Maclean's magazine ranked over 400 communities in Canada, and the findings echoed what all of us who call Whitchurch-Stouffville home know: we live in a great community.

We have a very diverse population in Whitchurch-Stouffville, where close to 40% of our entire population belongs to a visible minority group. Our four largest groups, as defined by population, are South Asian, Chinese, Black and Filipino.

Our deep Canadian heritage runs throughout the community, with over 37% of our population enjoying third-generation status in Canada. Our ancestors, however, hailed from many parts of the globe. Over 59% of our residents have European ancestors, while 37% of people in Whitchurch-Stouffville have ancestors from Asia. 67% of our population was born in Canada.

Those ancestral roots are also evident in our languages. Cantonese, Tamil, and Mandarin

–all Asian languages– are the most frequently spoken languages in Whitchurch-Stouffville households besides English.

Not only do our roots run deep throughout the community, we tend to stay put. A matter of fact, 74% of the population of Whitchurch-Stouffville in 2016, lived here in 2011. Not only do people love to move here, they want to stay, raise a family and enjoy retirement within the beautiful town we call home.

13,415

families in Whitchurch-Stouffville



41%

are families of 2



23%

are families of 3



27%

are families of 4



10%

are families of 5 or more

3.1

persons is the average family size in Whitchurch-Stouffville

33%

of adult residents of Whitchurch-Stouffville are single

37%

people living in Whitchurch-Stouffville are third generation Canadian

34%

people living in Whitchurch-Stouffville are first generation Canadian

1 in 3 residents of Whitchurch-Stouffville were born outside Canada



78%

speak English most often at home

5%

speak Cantonese most often at home

3%

speak Tamil most often at home

3%

speak Mandarin most often at home

1%

speak Italian most often at home

50,043 people

in Whitchurch-Stouffville

Maclean's Magazine Survey

In August of this year, Maclean's magazine released its ranking of 415 communities across Canada, based on wealth and economy, affordability, population growth, taxes, commute, crime, weather, access to health care, amenities and culture. The complete ranking can be found here: <https://bit.ly/35jGR21>

Best place to live in Canada:

61/415

Best place to live in Ontario:

35/387



48th best place is Canada to raise a family



12th best place is Canada to retire in



68th best healthcare in Canada

31% are under 24

41% are between 25 and 54

28% are over 55



Message from the Mayor

Iain Lovatt

When I was asked to write a “Year in Review” I could hardly believe that by the time you read this, the first year of this term of council will be done. It’s even harder to put into words what the last 12 months have meant to me. So many positive things have happened...where to begin? I set some goals during my campaign so reporting on them seems like a good place to start.

Unity of Council & the Director Team was and continues to be my highest priority for this term. We have a council & senior leadership team that respects each other, including our differing opinions and never loses sight of the goal - YOU, the residents of Whitchurch-Stouffville. It is a great honour to serve you as Mayor and a week doesn’t go by when I hear from residents about the positivity in the town. It’s also fair to say that the staff culture in the organization is changing every day for the better. A huge win for us this year was hiring Rob Adams as our new CAO when Roman Martiuk retired. Rob is a visionary leader with incredible people skills and we are extremely fortunate to have found him. We are all very excited about 2020 under Rob’s leadership.

Developing a Strategic Plan was quite an undertaking that required a lot of input and sacrifice from Council and staff to put together. It was a high priority and we spent much of February debating and deliberating what our focus should be. We now have a guiding document by which we can measure our success;

1. Fiscal Sustainability,
2. Expanding the tax base through a growing, diversified economy,
3. Service Excellence, and
4. Asset planning, maintenance and development

These four areas of focus for the rest of the term provide the foundation for what we believe is a plan for success.

Commercial/Industrial Land Development is something I have been laser-focused on this year. I set a goal to have a plan this term for how

we would grow our commercial/industrial tax assessment to lessen the burden on residents and I am happy to say we are making good progress. We have focused our efforts on 2 nodes- the 404 corridor and Highway 48. Both areas require tremendous partnership with York Region and the Province and council and myself have been actively working with representatives from each level of government to remove obstacles that could impede our future success. One thing is for sure, this isn’t a quick fix. Every conversation has to keep our natural heritage at the forefront, while working on servicing plans and costs with the region, land and business owners’ desires, all the while keeping the future viability of the town in focus. We are making solid progress and our voices are certainly being heard. Stay tuned.

Rebuilding our Brand was another key focus for council this term and we are launching a formal branding initiative in early 2020. Part of rebuilding our brand is increasing our level of public engagement, and we have been blown away by your level of engagement with Phase 1 of this process. It’s amazing actually. Over 3400 survey responses were received when we asked what we should be branding. Regardless of a possible name change, your involvement in shaping the future of our town is truly important, please keep it up!

Transportation is another difficult portfolio that lacks a quick solution. Increasing transportation service in WS again involves working with other levels of government that control the routes, frequency, and funding. Metrolinx and York Region Transit are now very aware of our increasing need for better transportation in and out of WS. As we plan for the future of WS, we envision a less car-dependent community that is safe, walkable and promotes healthy active living. To achieve some of these aspirations, we will need increased public transportation. This will continue to be a significant focus of Council into 2020.

Broadband in rural WS is another tough nut to crack as it is cost-prohibitive for the town to



solve alone. I am now on the board of directors of YTN (York Telecom Network) which puts us at the table in the decision-making process for future capital development in running fiber. And building off Councillor Ferdinands’ hard work over the last decade with ViaNet, we saw 50 kms of new fiber being laid in the ground this year and 700 new homes have access to high speed. Conversations with other providers, and other levels of government to help bring solutions to many residents who do not have high-speed internet service continue to be had.

2020 will no doubt be met with some challenges we need to navigate through. Our budget deliberations, working through our Official Plan Review, the Region’s Municipal Comprehensive Review, and how to grow as a community will all be top of mind. One thing I am certain of, we are up for the challenge and stay steadfast in our commitment to make Whitchurch-Stouffville an even better community in which to live, work and play.

Onward.

Message from the CAO

Rob Adams

At the Town of Whitchurch-Stouffville, we work hard every day to make our residents’ lives better by delivering the services that you want and need. We are focused on providing exceptional customer service and value for the services you receive.

We are pleased to report on our progress towards building a terrific Community. Building our community is not new for us. We are guided by the goals and objectives of the Town’s Strategic Plan adopted by Council in July 2019, and its commitment to a customer first approach.

You have an organization that delivers services to very high standards and which is deeply committed to exceeding those standards and making life even better. For example:

- At a time when recent media coverage has raised concerns regarding municipal drinking water in Canada, our Ballantrae and Stouffville water distribution systems scored 100% and 94.02% respectively and

are providing high quality drinking water to our residents.

- “Come Together Whitchurch-Stouffville” is a digital platform that allows all stakeholders and visitors to ask questions, share their ideas with Council, staff and other members of the community. This innovative public engagement tool will act as an information hub for all things regarding our community and is already being used for public consultations as we do our utmost to deliver the best services and programs.

While our focus is often forward looking, we also remember and honour our past through such initiatives as the:

- efforts underway to save Whitchurch-Stouffville’s oldest tree
- collaboration with MPP Paul Calandra, the Stouffville Legion Branch 459 and our own Museum to commemorate our local World War II veterans through the raising of very special memorial banners along

Main Street

- opening of a year long exhibit of rare Huron-Wendat artifacts, including recorded oral histories from Huron-Wendat Nation members as well as an immersive 3-D gaming experience for visitors to learn more about the community’s history and culture. The exhibit will be at our Museum until June 2020.

I am very proud to work every day with Town colleagues who consistently demonstrate their commitment to public service and take pride in delivering quality services to residents. Working with you – our residents, businesses and partners – we are building a living, thriving and leading community for generations to come.

As the town continues to grow, we will continue to maintain and strive to improve service delivery for all our residents and stakeholders, current and future. It is our honour and privilege to be of service to this community and we look forward to doing more in 2020.

Innovation & Collaboration

Community Engagement

Engaging with citizens is one of the most important things a community can do. It is a way to garner opinions about many of the Town's programs, services, projects, and initiatives.

The Town of Whitchurch-Stouffville has engaged the public in many ways over years, including holding Public Information Centres, conducting surveys and door-to-door canvassing, but 2019 saw a huge addition to our arsenal: the launch of a new community engagement web platform called *Come Together Whitchurch-Stouffville*.

The platform, available on your mobile device and your computer, provides many ways you, the public, can contribute to our projects.

Launched in September, you can access it at cometogetherws.ca.

Digital Growth

Not only did the Town launch a new web platform for community engagement, but our digital growth in other areas continued to rise as well.

Near the end of the year, *Virtual Town Hall*, a new platform that allows residents and business owners to view their various accounts, including taxes and water, was launched. Online payments are now at the touch of your mobile device.

Growth in other digital areas, like social media, our podcast the *Talk of the Town*, and numerous initiatives at the Library, grew to record numbers in 2019.

With new projects underway, like a new Town mobile app, 2020 will continue the trend of reaching more people than ever.

"On the Road"

"On the Road in Whitchurch-Stouffville," the Town's monthly journal, as editor David Tuley calls it, continues to gain a reputation throughout the community.

In 2019, not only did the 'journal' expand to 24 pages and start generating advertising revenue, but reaction throughout the community continued to grow. It showed that not only are people reading it, but they also love it.

There are many reasons for that according to Tuley, but one is certainly the 'at home' feel one gets while thumbing through its pages. It is full of stories about businesses that you and I patronize every day, and of people that make this community stronger.

Next year will see "On The Road" grow even more with a big announcement slated for early next year. Stay tuned.

Volunteer Groups

Early into its latest term, Council shook up the structure of their advisory committees. In the move, the number of Council Appointed Committees fell to five, but as of the end of 2019, twelve Staff Working Groups were in operation. All of them composed of hard-working, dedicated volunteers.

The Heritage Advisory Committee and the Accessibility Advisory Committee make recommendations to Council regularly.

The steering committees help staff with major projects and events. New committees include the 55+ Working Group and the Road Watch Working Group. These join the returning Environmental Working Group, Main Street Reconstruction Working Group, the Parking Working Group, and others.

A complete list can be found on the Town's website, townofws.ca

180,000 issues of "On The Road in Whitchurch-Stouffville" mailed to 17,552 households

217 local business promoted
98 local events promoted
42 pages of Town services & initiatives promoted

Over **100** volunteer positions available on **18** Town committees and working groups

5000 visits to our new community engagement website in its first month

66k impressions on social media of our podcast the 'Talk of the Town'

5.5k citizens offered their opinion on the two most popular town projects this year

- 1** potential Town name change
- 2** cannabis retail stores
- 3** Memorial Park re-design

62k telephone calls received by Customer Service in Town Hall



Animal Services

Early in 2019, the Town of Whitchurch-Stouffville moved its Animal Services in-house as part of the By-Law division. This marked a substantial cost savings over the previous outsourced contract.

Animal Services oversees the enforcement of the animal services by-law, cares for sick, injured or trapped wildlife, and assists police when needed amongst many other duties.

Over the year, animal patrol officers have returned many lost pets and helped injured animals found throughout the municipality. It was not uncommon to find our officers helping to relocate trumpeter swans to new habitats, or tending to injured ospreys.

The Town continues its relationship with the Pickering Animal Shelter, where strays and lost pets are cared for. For more information about our services, please call Animal Services at (905) 640-1910 ext. 2230.



Message from
Ken Ferdinands
COUNCILLOR, WARD ONE

The latter part of 2018 and 2019 proved to be a pivotal time in the evolution of the Town.

It has become evident to residents that to accomplish anything even of a minor nature a climate of good will and willingness to co-operate with a range of parties must exist. I am confident in conveying to you that the Town is led by a Mayor and Council who see each other as a part of a team and conduct the Town's business in a collegial and responsible manner.

I want to assure you that we are getting things done.

In Ward 1, having obtained the concurrence of other members of Council; two major infrastructure projects, namely St John's SR and the Vandorf SR were completed before the onset of winter.

I am pleased to report that the deployment of fiber optic capacity in the Ward continues. Credit for this accomplishment lies with the

residents who showed considerable foresight and a willingness to embrace the reality that ultimately the end user would have to fund a portion of this asset. Ours was the first rural community in the country to achieve this level of penetration. Other jurisdictions see what we did as a model. We started to talk about how we were going to get this done almost 7 years ago. Thank you for your patience and willingness to embrace a certain level of risk to get this done.

As you no doubt have noticed my annual newsletter has been replaced by a publication that is broader in scope and encompasses the entire municipality. I hope you will take the time to learn more about where we live and how we interface with other elements of government.

I want to take this opportunity to convey my very best to you and your family this Christmas Season.



Message from
Maurice Smith
COUNCILLOR, WARD TWO

It seems that each year Ward 2 continues to evolve and change. Last year it was the opening of the great new Field-house in Ballantrae Park and the rebuilding of the tennis courts.. This year it is the construction of the new plaza on the corner of Highway 48 and Aurora Road. Plus the opening of the revised Felcher Park.

The year prior to that it was the opening of the new Coultice Park at Musselman's Lake.

We are blessed to have these great facilities available to us.

The Field house has become the ideal location for hosting smaller parties and family events, such as weddings and or baby showers. The new plaza with the Tim's opening in November and the balance of the main building due to open in early spring will completely change the look of that corner.

Again this year Earth Day was celebrated with Musselman's Lake residents coming out

in force to assist with clearing debris from around the lake.

One challenge we do face is how we as a community continue to attract business that will provide work for local residents. To this end the town will, in 2020, undertake a comprehensive program to promote and create interest in our community.

Effective internet connectivity is still a challenge within many sections of Ward 2. Suppliers to the northern part of the community have been denied the required funding in the programs put forward by the federal government. I have supported local suppliers in their applications to these programs. However, another opportunity is in the offing and I will once again offer my support and if required assist staff with any required applications.

The areas around the Schickedanz Ballantrae Golf Club property is a prominent

part of Ward 2. We are fortunate to have had the contribution of this developer over the past twenty-five years. Their golf course building project is now completed. As a final contribution to the town and local community they have offered to allocate a 29 acre parcel of forest to be used as a public park. Formal legalities are underway and more will be heard about this when the park officially opens in the near future.

Personally I would like to thank all residents for your support, comments and involvement over this past year. Ward 2 is a great and involved community. On behalf of my wife and I we extend to you and your family all the best for the upcoming holiday season and the best of health and happiness during 2020.

Building for Future Generations

34
site plan applications
were received in the last
12 months

7
site plan applications
were approved, and
building has begun

Gormley Development

Bringing much needed economic development to the Gormley area of Whitchurch-Stouffville has been a hot topic throughout 2019. It has been such an important initiative for Council, that in June of this year they included it as a major focal point in their new 2018-2022 Strategic Plan.

As part of their desire to "expand the tax base through a growing, diversified economy," Council identified the need to focus on servicing the area with infrastructure. Neighbouring municipalities, such as Markham and Aurora, have significant developments located next to Highway 404, but Whitchurch-Stouffville does not.

The Province's *A Place To Grow Act*, identifies "provincially significant employment zones (PSEZs)" as areas of high economic output. Currently, PSEZs are located down the 404 corridor from the Markham/Whitchurch-Stouffville border down into the City of Toronto.

Council would like that changed. However, for significant development to occur in Gormley, which will bring in much-needed tax dollars, the area needs to be serviced with proper water and sewer infrastructure.

Therefore, at an August meeting, Council passed a motion to request York Region to "aggressively plan, design, and construct infrastructure to support employment growth along the highway 404 corridor..." and the Province be "encouraged to work with the Town of Whitchurch-Stouffville for job creation and economic development."

In the meantime, the Town continues to lobby the Province to extend the PSEZs north from Markham into Whitchurch-Stouffville. If completed, the Gormley area will see three

new zones, one in Gormley itself, one in Vandorf and one near Davis Drive.

They would ultimately "provide opportunities to improve coordination between land use planning, economic development, and infrastructure investments to support investment and job creation over the longer-term."

This will no doubt be a mandate of this Council for the foreseeable future.

Highway 48

Gormley isn't the only area in Whitchurch-Stouffville that may see some extensive development in the future. Numerous proposals were brought forward in 2019 to develop the area around Highway 48 and Hoover Park Drive.

One of those proposals was from the Zhawd Corporation who wants to develop the northeast corner and build Stouffville Commons, a complex containing a marketplace, a library (not municipally owned), offices, a hotel, and a conference centre, school/residence, agricultural centre, live/work townhouse units and apartment units. They estimate that the proposal will generate approximately 1,940 jobs and accommodate 2,929 residents

Smart Centres has also expressed interest in building office, retirement, and residential units next to SportChek. They would contain 8-12 storey mid-rise buildings according to Smart Centres.

Both requests require the Region of York to make amendments to the land's zoning. A decision is expected soon in the new year.



Ballantrae Plaza

Ballantrae will be getting its second major retail plaza when Ballantrae Gates opens in 2020. Located on the northeast corner of Highway 48 and Aurora Sideroad, it will include a Tim Hortons and PharmaChoice Pharmacy.

PACE On Main

Earlier this year, downtown Stouffville saw the opening of its first boutique condominium, *PACE on Main* built by Geranium Homes. The residence, located at the corner of Main Street and Lloyd Street in the heart of the community, features over 65 suites in the 5-storey building.

Under construction for close to two years, the ground level currently houses three businesses; PACE Credit Union (a long-time business on that location, and partner in its building), a Canada Post outlet (relocated from west on Main Street) and the new Stark's Barbershop.

Hampton Place

Nestled in a beautiful neighbourhood on Baker Hill boulevard just north of Main Street, *Hampton Place*, opened in the fall of 2019.

Advertised as an "exclusive and intimate condominium residence," *Hampton Place* (pictured below) has 157 suites on his 7 floors. Built by Royal Pine Condos, the development is close to Cardinal Point, a Geranium Homes neighbourhood with townhouses built close to ten years ago.

Close to three retail plazas and the Stouffville Automall, the development backs onto one of Ringwood's many green spaces within the Rouge River watershed.

Vista Flats

Another Geranium Homes development in west Stouffville, *Vista Flats* is located on Baker Hill Boulevard north of Millard Street in Cardinal Point.

Under construction for just over a year, it opened to residents late in 2019. It has a total of 120 condominiums, one-level flats and two-storey townhouses.

It is located close to *Hampton Place*, alongside protected green space of the Rouge River watershed, and adjacent to 30 kilometers of trails.

According to Geranium, the development sold out very quickly.

Ninth Line and Bethesda Rd.

This new subdivision will have a multi-use Catholic School (grades JK - 12) and 140 single-detached houses. Currently, fill operations are taking place and will continue until the summer of next year. The completion date is expected to be in 2022.

Tenth Line and Mantle Ave.

Two subdivisions are currently being built straddling Tenth Line south of Mantle Avenue. Combined they will have over 520 single detached homes, 340 townhouses, 14 live/work residences, two parks, and a Catholic elementary school.

Ninth Line and Reeves Way

The Pemberton Group's 9th and Main condominiums will be located on Ninth Line adjacent to Reeves Way Boulevard. It will consist of two 8-storey buildings, housing 246 condos, numerous townhomes and 2-storey penthouses.

1218

hectares of York Region Forest in Whitchurch-Stouffville, encompassing 13 tracts



58%
of people enjoy hiking



52%
of people enjoy dog walking



34%
of people enjoy nature



10%
of people enjoy cycling



There is no wifi in the forest, but I promise you will find a better connection - unknown



6290

hectares of Rouge National Urban Park at our southern doorstep

Preserving our Environment

ROUGE NATIONAL URBAN PARK

The Rouge National Urban Park is a first of its kind in Canada – a national urban park that is set to become one of the world’s largest protected areas in an urban setting. It connects Lake Ontario with the Oak Ridges Moraine, all situated just south of Whitchurch-Stouffville.

On September 23, the first Parks Canada-built facilities and trail opened in the Park. It included the Reesor and 19th Avenue Day Use Areas, as well as a new five-kilometre family-friendly, multi-use trail that connects the two-day use areas. The trail includes scenic lookouts and rest areas and weaves through marshlands, shaded woodlots and agricultural fields.

Our Town trails will now connect to these Park trails at Reeves Way Parkette.

The original Rouge Park was established in 1995 by the Province of Ontario in partnership

with Toronto, Markham, Pickering, and the Toronto and Region Conservation Authority. The original park consisted of approximately 40 square kilometres of parkland.

Once fully established, Rouge National Urban Park will be the largest urban protected area in North America, spanning 79.1 square kilometres in the heart of Canada’s largest and most diverse metropolitan area, overlapping the cities of Toronto, Markham and Pickering and the Township of Uxbridge.

The Park will be 23 times larger than Central Park in New York.

TWO NEW PARKS

Tresstown Parkette is currently being built near Sunnyridge Ave. and Filbert Court in Stouffville and is expected to open any day.

Felcher Park, at Felcher Blvd. and Iroquois Drive in Ballantrae opened in June, both to the pleasure of local parents and kids.

WATER QUALITY

In November, the Stouffville and the Ballantrae/Musselman’s Lake Water Quality reports were released. The reports, issued by the Ministry of the Environment, Conservation and Parks, measure water quality in the two water distribution systems in the municipality.

In the inspection, the Ministry found no instances of non-compliance for the Ballantrae/Musselman’s Lake water distribution system, receiving a final inspection rating of 100.00%.

The Ministry found one instance of non-compliance in the Stouffville water distribution system, receiving a final inspection rating of 94.02%. The non-compliance issue was a record-keeping item.

Both results were improvements over the 2018 inspections.



Message from
Hugo Kroon
COUNCILLOR, WARD THREE

It has been my pleasure to represent and serve the residents of ward 3 for the last five years.

This ward is one of the most diverse: rural areas, natural features, agriculture, estate developments, golf courses, hamlets and commercial areas. I am proud of the robust agricultural community, and those who live here and visit us for recreational facilities such as golf and equestrian.

Ward 3 is home to the Historic Grist Mill at Bruce's Mill Conservation Area which the Town, with support from the TRCA will soon designate under the Ontario Heritage Act. The same property also houses the YRP Safety Village, Tree Top Trekking and the world class BMX facility, Stouffville BMX.

Like the rest of the Town, many residents are concerned about traffic safety. I am happy to say that with the cooperation of the Region and the YRP, things are being done... the roundabout at 48 & Bloomington has reduced serious collisions and injuries and we have increased enforcement on Stouffville Rd., the commuter route into the village of Stouffville, including speed monitoring cameras and YRP presence. We will continue to work together towards other improvements, especially on the Bloomington corridor with the proliferation of dump trucks. With the recent opening of the Gormley Go Station

and the Bloomington Station next year, safe, convenient commuter traffic will remain a high priority.

The Town is also working to protect our future by providing new opportunities for companies to invest in W-S by providing employment opportunities and a much needed diversification of our tax base, to ease the burden on residential taxpayers. We are currently in discussions with the region, province and stakeholders to bring new lands into our commercial portfolio. The Highway 404 corridor is a significant investment in Provincial infrastructure and provides a very attractive location for employment growth due to the ease of access to the Provincial highway network. This valuable resource is being underutilized due to some of the Provincial Plans affecting us, and freezing these lands from development is a waste of municipal and provincial investment and economic development opportunities.

A current proposal for conversion of land immediately south of Bethesda Road by the owner is directly in line with the priority of Town Council to seek additional economic development opportunities along the Highway 404 corridor, which I am happy to support. And, the provision of municipal services or communal servicing systems

will help to minimize the potential negative environmental impacts from the existing individual private services and support the development of cleaner industrial uses.

I, along with all of council, are well aware of the need to balance continued protection of our natural heritage with the reality of intensification and economics. This means appropriate development which will in turn bring value to us through reducing development pressures on the rest of the Town, and will ensure our continued financial viability. As a 30 year resident of the Town who along with my family have enjoyed the beauty of our rural areas, I will continue to fight to ensure these rural areas are protected.

We have a long road ahead of us and that path will not be without its challenges, but with our dedicated, professional and highly motivated staff, along with the rest of this council whom I am proud to serve with, the future looks bright.

Stay tuned.



Message from
Rick Upton
COUNCILLOR, WARD FOUR

Ward 4, The Back Bone of Stouffville, has been privileged to have the lion's share of residential and commercial development in Stouffville over the last 12 months. These developments are all at different stages, some just completed, some halfway and some breaking ground in the near future.

In terms of residential development in the 'Western Approach' there will be 649 new condos and 231 Town Houses developed.

In the balance of Ward 4 there will be another 341 condos and 161 apartments. Included in the 161 apartment count is 100 affordable housing units.

Commercial development has also been very active in Ward 4 this past year...

The Longo's plaza is now 99% full with 2 strong anchors - Longo's and Good Life Fitness. There is an impressive selection of businesses in the plaza from restaurants to The Beer store to Dentists and décor. They have all been very pleased with how welcoming Stouffville has been. The plaza has created 100's of both full and part-time jobs.

Canadian Tire is planning a Gas Station and a strip plaza at their old location at 5945 Main Street...more jobs.

At the corner of Hoover Park and Mostar are Commercial Condos which will be complete in the next 2 months. These commercial condos

will bring more businesses to Town and of course, more jobs.

At 185 Mostar Street a remarkable private school is being constructed. The school will offer classes for grades 5-12 and include a residence for out-of-town students.

At 5769 Main Street (directly behind Longo's) is the site of a new 6-story Seniors Building. The facility will consist of 100 independent, 117 independent with support and 31 assisted living beds. They are breaking ground December 2019.

On Sandiford Drive and Hoover Park, Mon Sheong Foundation is building a new long-term care facility, which was awarded by the provincial government in early 2018. There is a very long waiting list for long-term care beds and we are privileged that this facility is being built in Stouffville. When the facility is completed it will be employing over 1,000 new recruits, ranging from nurses to housekeeping to administrative staff. In phase 1 and 2 there will be 4 buildings, 3 of which are 6 stories and the other is 11, in total there will be 1,235 beds.

Stouffville Commons is 67 acres at the East/North of Hoover Park across from Smart Centre that at present is a corn field. There will be 736,000 square feet that will be developed into an assortment of non-residential that includes Offices, Hotel, Convention Centre,

Education Centre, Agriculture Centre, Public Centre etc. There will also be 1,871 residential units

This development will create 1,940 jobs. The majority of these jobs will provide Stouffville residents with opportunities to live and work in Town. Data from the 2016 Census of Canada indicates that over 80% of residents in Stouffville work outside the municipality. Not only will we gain jobs but the Town will collect \$1.9m in annual taxes.

Ward 4 did a test program with flex posts on some streets located near schools or parks. The test was a success with 85% positive feedback. We expect to expand the program in 2020. We are aiming for these locations to remain close to schools and parks.

With all of this development, one thing is for sure, we are certainly growing as a Town but as a community we maintain our friendly "small town" spirit. I am excited about the opportunities that all of this growth has to offer and I can't wait to see what the next 12 months bring to light.

If you have any questions about any of these updates or anything happening in Ward 4, please do not hesitate to contact me.

Have a great holiday and Merry Christmas!

Making a Living

We have a very diverse local economy in our Town. Our strengths lie in high-tech and knowledge-based industries, manufacturing, building and construction as well as agriculture and tourism sectors. We have a labour-force of over 23,000 people.

Being so close to other major urban areas is a huge asset for the town. Major transportation and communication routes run through our town directly connecting us to areas within York Region, the GTA and internationally. GO Transit and local York Region bus service

provide constant and reliable transportation to, from and within the Town. We are a short 35 minute drive to the City of Toronto.

Of the over 23,000 residents currently employed, 70% travel to a specific location, 11% work from various locations (such as the trades), and an impressive 10%, or over 2,200 residents, work from home. Close to one in five people who work at a specific location remain in Whitchurch-Stouffville to do so, however close to 67% do travel less than 45 minutes to work, in Whitchurch-Stouffville

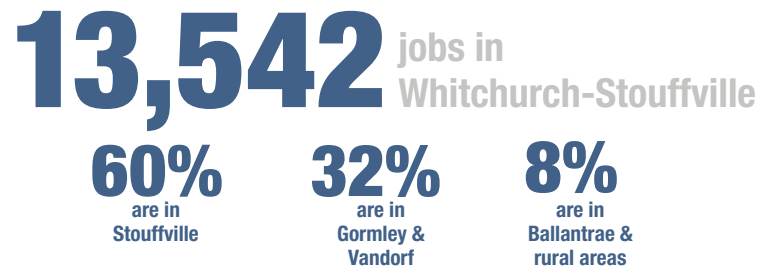
or otherwise.

In February, Council approved a \$88.9 million dollar Operating and Capital budget, all while keeping the Town's tax rate as the 6th lowest in the GTHA. The Town's residential tax rate for 2019 was 0.753%.

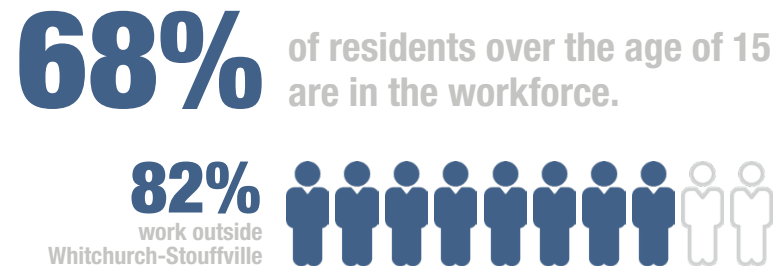
In the Maclean's survey mentioned on page 4, Whitchurch-Stouffville ranked as the 6th richest community in Canada, and the second richest in Ontario, only behind King.

The average household net worth is over \$2.4 million.

Only **6** of the 27 municipalities in the GTHA have a lower residential tax rate than Whitchurch-Stouffville



Only **5** have a lower commercial & industrial tax rate than Whitchurch-Stouffville

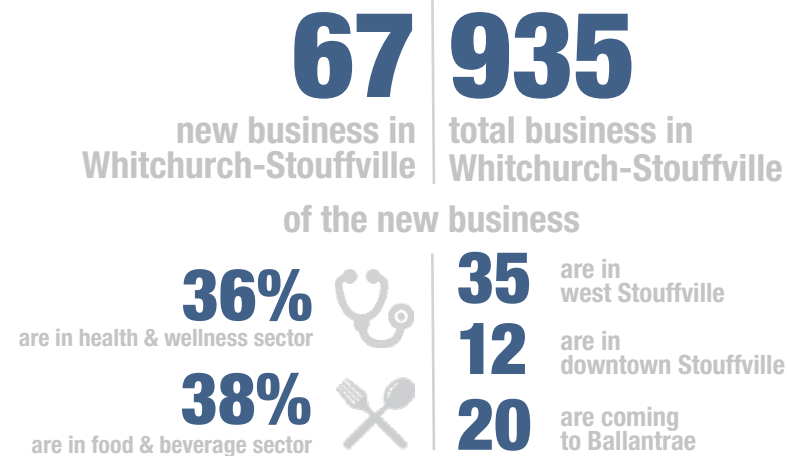


Cannabis Retail Stores

After an extensive community engagement initiative where the public submitted thousands of opinions, Council in January decided to 'opt-in' to allowing cannabis retail stores in Whitchurch-Stouffville.

The Province of Ontario operates a lottery system for deciding who may open a store in a town that decided to opt-in and has a population higher than 50,000.

On August 21, Corner Grass Corp. 'won' the lottery and was permitted by the Alcohol and Gaming Commission to run a cannabis store in Stouffville at 5779 Main St., Unit 5 in the new Longo's plaza.



116 farms in Whitchurch-Stouffville on 13,668 acres





Message from
Richard Bartley
COUNCILLOR, WARD FIVE

Wow, where did that year go?

It's been an honour and a pleasure to serve the residents of Whitchurch-Stouffville and work hard to represent the Ward 5 residents. The first order of business for me was communicating and restoring confidence and support to our staff. We have a tremendous group of people working hard every day for the betterment of our community.

Development wise, the phase 3 lands are well in our sites. The all new Metrolinx Go Commuter Station is in its early stages and if everything goes as planned should be up and running in the next year or so. By the way, the big tree you see behind me is approximately 170 - 200 years old and thanks to MPP Paul

Calandra and Mayor Iain Lovatt and everyone else involved - this tree has been preserved and will be here for another 200 years or more!

Tenth Line and Bethesda area will eventually be developed with some high and medium density housing and will bring between 8 to 10,000 new residents and some new employment opportunities. There will be some commercial and retail opportunities at the old Stouffville Country Market property. In behind it there will be residential homes. Forsyth Road will eventually connect with Durham 30.

If you could please keep our downtown Merchants in mind during the Christmas Season and beyond. We have some great

shops and restaurants down there, spend your money in Stouffville when you can. We all win with a strong, vibrant Downtown core.

There is so much that Whitchurch-Stouffville has to offer. Please take advantage of the best Town in York Region.

Have a very Merry Christmas and a healthy and prosperous New Year!

Best Wishes to you and your family!



Message from
Sue Sherban
COUNCILLOR, WARD SIX

This first year since I was re-elected as Councillor Ward 6, has been rewarding and eventful. I have truly enjoyed seeing the growth and changes to our ward from when I was first a Councillor in 1997.

Ward 6 plays host to many of Stouffville's local festivals and events, including Ribfest, Art in the Park, Strawberry Festival and Snowflakes & Starlight. I hope everyone had the opportunity to participate and enjoy themselves this year!

Council has been busy updating our community's guiding documents to ensure they reflect your vision: the Official Corporate Strategic Plan, Memorial Park Master Plan, Development Official Plan, rebranding for a new Economic Development Plan and the Library Board Strategic Plan.

I have been listening to all of your concerns and taking action wherever possible to help make your quality of life better. Traffic (safety and speeding) is the number one concern in Ward 6 and I assure you, it is mine as well. We have reinstated the Road Watch Committee; I

have been offering lawn signs to urge folks to SLOW DOWN and respect their neighbours; and I have been working with our Community York Regional Police department to find solutions. Last spring we tested road bollards near Glad Park and they will now be installed in school zones to enhance safety.

The Memorial Park Master Plan is long overdue and after hosting many public planning sessions, phase one construction will begin Spring 2020. Thank you to all who participated; this park is for residents and will now reflect your vision. Burkholder Street is undergoing an environmental assessment as residents' concerns are considered within the Master Plan; the report on access to the Leisure Centre and safety is due back early next year.

Noise pollution caused by GO Trains (Metrolinx) is increasingly more of a concern for Ward 6. The former Town Council supported whistle cessation but only at road crossings located in Ward 5, resulting in Ward 6 residents feeling frustrated at the unequal

treatment. The additional trips that Metrolinx GO recently announced, introducing seven days a week service from Lincolnville station (leaving early and returning late), has now created additional concern for the increase in noise. Council supported a new in-depth study on Whistle Cessation and the report will be brought to council early next year for review.

I am proud and humbled to have been selected as one of the 'Portraits: Visionary Women Shaping the Stouffville Community' participants by local photographer Juliana Williams along with a number of other notable women in the community. Ms. Williams believes the chosen women, "...have made an indelible impact on the community through the roles they play in building, strengthening, and shaping Stouffville". Congratulations to Julie and all of the women that were honoured.

I look forward to what 2020 will bring our community.

Best Wishes for the Holidays and Merry Christmas!

Caring for all Generations



The ABLE Network

With the support of Council in 2019, space was made available for the ABLE Network to rent at Latham Hall. This community-based program offers inclusive work and recreation opportunities for young adults with intellectual disabilities, in a natural community setting.

Having a home in Stouffville for the ABLE Network has allowed for meaningful opportunities for residents who otherwise wouldn't have local opportunities available to them. It also allows for a smooth integration into the community for those requiring support. This, in turn, increases community acceptance.

Opportunities are growing in the ABLE Network as local individuals with intellectual delays take advantage of local programming, and not having to venture outside their community for social and programming options.

The Town looks forward to an even more successful 2020 for the organization.

Affordable Housing

During the summer, representatives from the Regional Municipality of York made a presentation to Whitchurch-Stouffville Council outlining their vision for an affordable housing complex on Main Street west of Palmwood Gate.

The complex, proposed to have approximately 100 rental apartments, including 1, 2, and 3 bedroom units and commercial space, would be built on land which was previously occupied by Chas. Richards and Sons farming equipment.

It is proposed to be a two-phase development. The first phase is proposed to be a 6-storey development on 3.7 acres of land.

The Region has stated there is a significant demand for rental housing in Whitchurch-Stouffville. According to them, 3,247 households on the affordable housing waitlist have identified Whitchurch-Stouffville as a desired location.

The project would be funded in the Region's 20 year Capital Plan.

55+ Club

This year marked the first full year the 55+ Club has enjoyed their new location at 6240 Main Street. However, not only did they move locations, but they also became a full entity of the Town with the formation of the 55+ Club Staff Working Group and the Town staff working together to oversee club operations.

As part of the Town's responsibilities, the club created a formal volunteer structure with job descriptions to help guide their operations and functions.

With over 600 active members in 2019, the club not only received funding support from the Federal government for supplies, services and celebrations, but they merged with the Tamil Golden Years club to welcome older adults in the community with open arms.

The 55+ Club offers registered programs, drop-in programs, cultural celebrations, special events, trips, lunches and much more.

Their grand opening was held in March and their Open House jammed the place! Be sure to pop in and check out their activities.

Long-Term Care Facilities

As the Town's population ages, the need for long-term care facilities and retirement residences increase. No less than four development proposals have been received by the Town to build seniors and long-term care centres.

The largest of these is the proposed Mon Sheong long-term care residence located on Sandiford Drive in Stouffville. When approved by Council and completed, the 11-storey complex will comprise 1,235 units of long-term care and selective continuing care suites. It will become the largest long-term care facility in Stouffville.

The Fieldgate Seniors complex, comprising of 248 units, is currently proposed for 135 Mostar Street across from the Stouffville Legion. And the proposed Gottardo long-term care facility on the northwest corner of Sandiford Drive and Hoover Park would have 181 units.

Overall, these facilities would add over 1600 units of care to the Town.



program participation
at the Library has
increased

228%

circulation of materials
has increased

64%

since 2018

1
st

place finish in the **STEAM Certificate Program**, Larry Moore Challenge, Ontario Library Association



Town of
Whitchurch-Stouffville

111 Sandiford Dr., Stouffville ON L4A 0Z8

905-640-1910 - Fax: 905-640-7957 Web: townofws.ca

Follow us on Twitter and Instagram. Like us on Facebook

The Town of Whitchurch-Stouffville would like to thank everyone who helped make this "Year in Review" possible. A special thanks to the Regional Municipality of York, Parks Canada, Whitchurch-Stouffville Council and staff, and the great residents and businesses of our town.

All photos by the Town of Whitchurch-Stouffville, except:

Page 12-13: Royal Pine Homes, royalpinecondos.com

Page 14: The Regional Municipality of York

Page 15: Margaret Cornell Kirk / ©Parks Canada / Rouge National Urban Park

Download statistical credits at townofws.ca/2019YearInReview