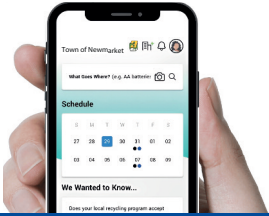


2024 TOWN OF STOUFFVILLE Waste & Recycling Collection CALENDAR



Download the
Recycle Coach App
for all things waste.

Stouffville Questions?

Contact GFL at 1-866-421-5625
or email WasteLine@gflenv.com
townofws.ca



To the
curb by
**7:00
am**

! Blue boxes and green bins are replaced free of charge if broken. Contact GFL to schedule a bin exchange or to schedule a large metal item pickup. Blue Boxes, Green Bins and Kitchen Catchers are available for purchase visit townofws.ca/garbage-recycling-and-composting



Organics

- **Line your green bin** with a **certified compostable bag**. Securely tie bag.
- **Remove** plastic packaging and overwrap from food before placing in your kitchen catcher or green bin.
- **Organic waste** is any material that is biodegradable and comes from either a plant or an animal.

X DO NOT PLACE any item made of plastic, rubber, wax, wood, Styrofoam™ or any other garbage in your green bin.



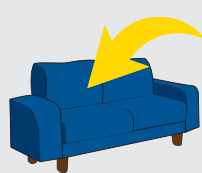
Garbage

Limit of 3 bags or containers

Additional Garbage Bags

Use garbage bag tags to place out up to three more garbage bags. Bag Tags can be purchased for \$3 each at:

- B.J.'s Gift & Variety, 6416 Main Street
- Well-Plus Pharmacy, 5402 Main Street
- Petro-Canada Station, 15288 Woodbine Avenue
- Municipal Offices, 111 Sandiford Drive



Large or Oversized Items (Limit of 4 large items)

Picked up on garbage collection days. Toilets must be separated into 2 pieces (tank/bowl) for collection.

Broken Glass or Sharp Objects

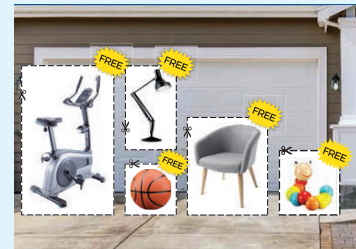
Securely package separately in a box and label.



Curbside Giveaway Days

townofws.ca

Place gently used items labelled "FREE" at the curb in front of your home for others to take from 7 a.m. to 5 p.m. Unclaimed items must be removed after 5 p.m.



2024 Dates

- May 25
- June 29
- July 27
- August 24
- September 28



Recycling

- **Please ensure** items are loose, empty, clean and free of food.
- **DO NOT** overfill your blue box.
- **Flatten and bundle** cardboard with twine/string. Maximum size 36" x 36" x 12".
- **Shredded paper** is not accepted in the blue box, place small amounts in your green bin.

X Bagged recycling is not accepted for collection. Oversized containers and containers with attached lids and/or wheels are not accepted containers.



Renovation Waste



Renovation materials such as concrete, wood and drywall are not collected curbside.

Visit york.ca/WasteDepots for disposal options.



Textile Recycling

Donate adult and children's clothing and footwear, household textiles such as towels, pillows, and curtains. Donated textiles must be dry. Take them to a bin near you:

townofws.ca

- Whitchurch-Stouffville Leisure Centre, 2 Park Drive
- Stouffville Clippers Complex/Stouffville Fire Station, 100 Weldon Road
- Ballantrae Community Centre, 5592 Aurora Road
- Vandorf Park, 14732 Woodbine Avenue
- Stouffville Go Station, 6176 Main Street
- Old Elm GO Station, 12958 Tenth Line



Leaf and Yard Waste

Place leaf and yard waste in Kraft paper bags or garbage containers (no lids) marked "Yard Waste". Pumpkins should be included with yard waste for collection.

Maximum weight per container/bundle is 22 kg (50 lbs.)

Bundle branches with twine. Bundles can be up to four feet in length and two feet in diameter.



Individual branches can be up to four inches in diameter.

Yard waste in plastic bags, cardboard boxes, blue boxes, green bins or unmarked containers will not be collected.

X Grass clippings are not accepted!

Household Hazardous Waste, E-waste and Batteries

Household hazardous waste (HHW) should be brought to a HHW depot for safe disposal. Electronic waste (e-waste) is any electronic equipment that no longer works and cannot be repaired. E-waste should not be thrown in the garbage, it is considered hazardous.



For more information visit york.ca/waste or call 1-866-665-6752

Battery Recycling Program townofws.ca

Household Battery Recycling Program allows residents to drop-off used household batteries in bins at:

- Stouffville Arena, 12483 Ninth Line
- Stouffville Clippers Complex, 120 Weldon Road
- Whitchurch-Stouffville Leisure Centre, 2 Park Drive
- W-S Municipal Offices, 111 Sandiford Drive



Collection Reminders

Weight and size limits

- Only use **Town issued Blue Boxes** for recycling and **Town issued Green Bins** for organics. Cardboard boxes, garbage bags (any colour) and wheeled containers are not accepted.
- For garbage there is a **three bag/container limit**. Additional bags/containers are allowed with a garbage tag attached.
- Use **garbage containers (no metal cans)** with open handles and a removable lid, and the maximum volume of 33 gallons/125 L.
- All waste and recycling containers must **weigh less than 22 kg (50 lbs.)**

JANUARY

S	M	T	W	T	F	S
	1	2	3	4	5	6
7	8	9	10	11	12	13
14	15	16	17	18	19	20
21	22	23	24	25	26	27
28	29	30	31			

FEBRUARY

S	M	T	W	T	F	S
				1	2	3
4	5	6	7	8	9	10
11	12	13	14	15	16	17
18	19	20	21	22	23	24
25	26	27	28	29		

MARCH

S	M	T	W	T	F	S
					1	2
3	4	5	6	7	8	9
10	11	12	13	14	15	16
17	18	19	20	21	22	23
24	25	26	27	28	29	30

APRIL

S	M	T	W	T	F	S
	1	2	3	4	5	6
7	8	9	10	11	12	13
14	15	16	17	18	19	20
21	22	23	24	25	26	27
28	29	30				

MAY

S	M	T	W	T	F	S
				1	2	3
4	5	6	7	8	9	10
11	12	13	14	15	16	17
18	19	20	21	22	23	24
25	26	27	28	29	30	31

JUNE

S	M	T	W	T	F	S
						1
2	3	4	5	6	7	8
9	10	11	12	13	14	15
16	17	18	19	20	21	22
23	24	25	26	27	28	29

JULY

S	M	T	W	T	F	S
	1	2	3	4	5	6
7	8	9	10	11	12	13
14	15	16	17	18	19	20
21	22	23	24	25	26	27
28	29	30	31			

AUGUST

S	M	T	W	T	F	S
				1	2	3
4	5	6	7	8	9	10
11	12	13	14	15	16	17
18	19	20	21	22	23	24
25	26	27	28	29	30	31

SEPTEMBER

S	M	T	W	T	F	S
1	2	3	4	5	6	7
8	9	10	11	12	13	14
15	16	17	18	19	20	21
22	23	24	25	26	27	28
29	30					

OCTOBER

S	M	T	W	T	F	S
		1	2	3	4	5
6	7	8	9	10	11	12
13	14	15	16	17	18	19
20	21	22	23	24	25	26
27	28	29	30	31		

NOVEMBER

S	M	T	W	T	F	S
					1	2
3	4	5	6	7	8	9
10	11	12	13	14	15	16
17	18	19	20	21	22	23
24	25	26	27	28	29	30

DECEMBER

S	M	T	W	T	F	S
1	2	3	4	5	6	7
8	9	10	11	12	13	14
15	16	17	18	19	20	21
22	23	24	25	26	27	28
29	30	31				



Green Bin and Blue Box Collection WEEKLY (No Limit)



Yard Waste Collection BI-WEEKLY (No Limit)



Garbage Collection Week BI-WEEKLY on your regular day



Christmas tree collection



Curbside Giveaway Day

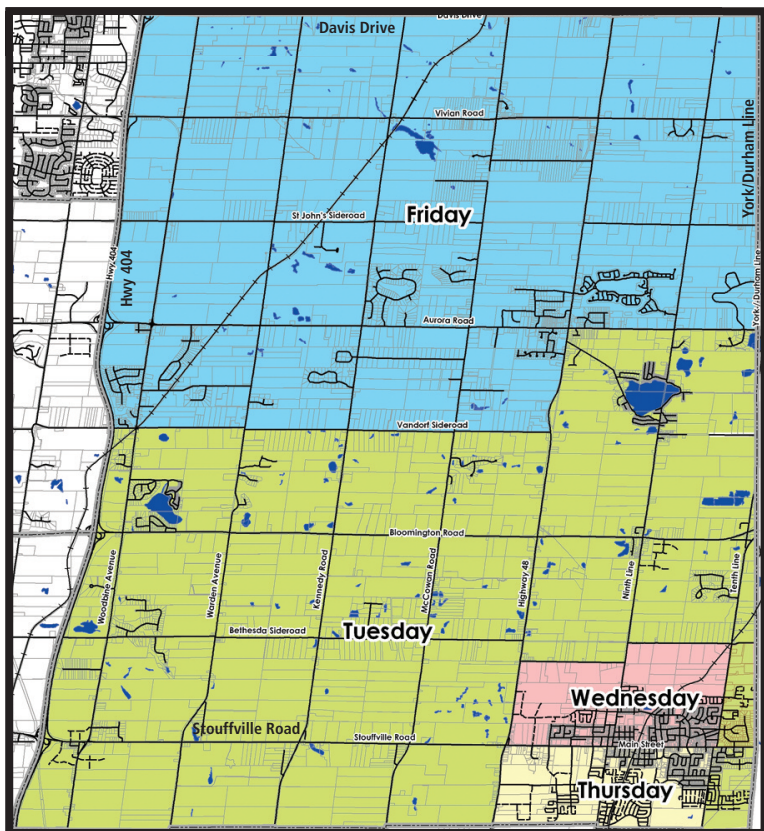


Compost Giveaway Day - May 11



Electronics Recycling Event - May 4/Oct. 5

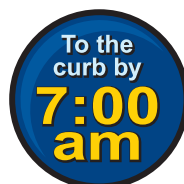
Waste Collection Map



Waste Collection Inquiries

GFL at 1-866-421-5625 or WasteLine@gflenv.com

- Missed collections
- Schedule a metal item pick up
- Broken blue box/green bin exchange
- New resident information



The Regional Municipality of York

1-866-665-6752 • york.ca/wastedepots

- **Georgina Transfer Station** • 23068 Warden Ave., Georgina
- **Bloomington Yard Waste Depot** • 1351 Bloomington Rd, East, Richmond Hill
- **East Gwillimbury HHW and Recycling Depot** • 225 Garfield Wright Blvd, East Gwillimbury
- **Markham Household Hazardous Waste Depot** • Rodick Rd, south of 14th Avenue, Markham
- **Elgin Mills Community Environmental Centre** • 1124 Elgin Mills Rd., East, Richmond Hill
- **McCleary Court Environmental Centre** • 130 McCleary Court, Vaughan

TOWN OF STOUFFVILLE

111 Sandiford Drive, Stouffville, ON L4A 0A8
townofws.ca

