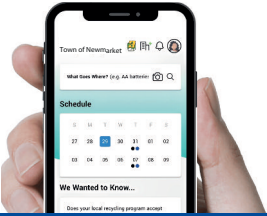


# 2024 TOWN OF STOUFFVILLE Waste & Recycling Collection CALENDAR



Download the  
**Recycle Coach App**  
for all things waste.

## Stouffville Questions?

Contact GFL at 1-866-421-5625  
or email [WasteLine@gflenv.com](mailto:WasteLine@gflenv.com)  
[townofws.ca](http://townofws.ca)



To the  
curb by  
**7:00  
am**

**!** Blue boxes and green bins are replaced free of charge if broken. Contact GFL to schedule a bin exchange or to schedule a large metal item pickup. Blue Boxes, Green Bins and Kitchen Catchers are available for purchase visit [townofws.ca/garbage-recycling-and-composting](http://townofws.ca/garbage-recycling-and-composting)



## Organics

- **Line your green bin** with a **certified compostable bag**. Securely tie bag.
- **Remove** plastic packaging and overwrap from food before placing in your kitchen catcher or green bin.
- **Organic waste** is any material that is biodegradable and comes from either a plant or an animal.

**X DO NOT PLACE** any item made of plastic, rubber, wax, wood, Styrofoam™ or any other garbage in your green bin.



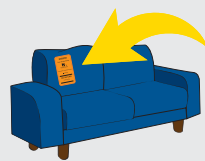
## Garbage

**Limit of 3 bags or containers**

### Additional Garbage Bags

Use garbage bag tags to place out up to three more garbage bags. Bag Tags can be purchased for \$3 each at:

- B.J.'s Gift & Variety, 6416 Main Street
- Well-Plus Pharmacy, 5402 Main Street
- Petro-Canada Station, 15288 Woodbine Avenue
- Municipal Offices, 111 Sandiford Drive



### Large or Oversized Items

**(Limit of 4 large items)** Picked up on garbage collection days. Toilets must be separated into 2 pieces (tank/bowl) for collection.

### Broken Glass or Sharp Objects

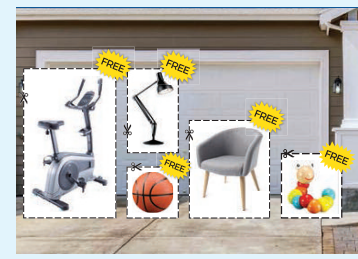
Securely package separately in a box and label.



## Curbside Giveaway Days

[townofws.ca](http://townofws.ca)

**Place** gently used items labelled "FREE" at the curb in front of your home for others to take from 7 a.m. to 5 p.m. Unclaimed items must be removed after 5 p.m.



### 2024 Dates

- May 25
- June 29
- July 27
- August 24
- September 28



## Recycling

- **Please ensure** items are loose, empty, clean and free of food.
- **DO NOT** overfill your blue box.
- **Flatten and bundle** cardboard with twine/string. Maximum size 36" x 36" x 12".
- **Shredded paper** is not accepted in the blue box, place small amounts in your green bin.

**X Bagged recycling** is not accepted for collection. Oversized containers and containers with attached lids and/or wheels are not accepted containers.



## Renovation Waste



Renovation materials such as concrete, wood and drywall are not collected curbside.

**Visit [york.ca/WasteDepots](http://york.ca/WasteDepots) for disposal options.**



## Textile Recycling

**Donate** adult and children's clothing and footwear, household textiles such as towels, pillows, and curtains. Donated textiles must be dry. Take them to a bin near you:

[townofws.ca](http://townofws.ca)

- Whitchurch-Stouffville Leisure Centre, 2 Park Drive
- Stouffville Clippers Complex/Stouffville Fire Station, 100 Weldon Road
- Ballantrae Community Centre, 5592 Aurora Road
- Vandorf Park, 14732 Woodbine Avenue
- Stouffville Go Station, 6176 Main Street
- Old Elm GO Station, 12958 Tenth Line



## Leaf and Yard Waste

Place leaf and yard waste in Kraft paper bags or garbage containers (no lids) marked "Yard Waste". Pumpkins should be included with yard waste for collection.

**Maximum weight** per container/bundle is 22 kg (50 lbs.)

**Bundle branches** with twine. Bundles can be up to four feet in length and two feet in diameter.



**Individual branches** can be up to four inches in diameter.

Yard waste in plastic bags, cardboard boxes, blue boxes, green bins or unmarked containers will not be collected.

**X Grass clippings** are not accepted!

## Household Hazardous Waste, E-waste and Batteries

Household hazardous waste (HHW) should be brought to a HHW depot for safe disposal. Electronic waste (e-waste) is any electronic equipment that no longer works and cannot be repaired. E-waste should not be thrown in the garbage, it is considered hazardous.



**For more information visit [york.ca/waste](http://york.ca/waste) or call 1-866-665-6752**

## Battery Recycling Program [townofws.ca](http://townofws.ca)


Household Battery Recycling Program allows residents to drop-off used household batteries in bins at:

- Stouffville Arena, 12483 Ninth Line
- Stouffville Clippers Complex, 120 Weldon Road
- Whitchurch-Stouffville Leisure Centre, 2 Park Drive
- W-S Municipal Offices, 111 Sandiford Drive



## Collection Reminders

### Weight and size limits

- Only use **Town issued Blue Boxes** for recycling and **Town issued Green Bins** for organics. Cardboard boxes, garbage bags (any colour) and wheeled containers are not accepted.
- For garbage there is a **three bag/container limit**. Additional bags/containers are allowed with a garbage tag attached. 
- Use **garbage containers (no metal cans)** with open handles and a removable lid, and the maximum volume of 33 gallons/125 L.
- All waste and recycling containers must weigh less than 22 kg (50 lbs.)

## JANUARY

S	M	T	W	T	F	S
	1	2	3	4	5	6
7	8	9	10	11	12	13
14	15	16	17	18	19	20
21	22	23	24	25	26	27
28	29	30	31			

## FEBRUARY

S	M	T	W	T	F	S
				1	2	3
4	5	6	7	8	9	10
11	12	13	14	15	16	17
18	19	20	21	22	23	24
25	26	27	28	29		

## MARCH

S	M	T	W	T	F	S
					1	2
3	4	5	6	7	8	9
10	11	12	13	14	15	16
17	18	19	20	21	22	23
24	25	26	27	28	29	30

## APRIL

S	M	T	W	T	F	S
	1	2	3	4	5	6
7	8	9	10	11	12	13
14	15	16	17	18	19	20
21	22	23	24	25	26	27
28	29	30				

## MAY

S	M	T	W	T	F	S
			1	2	3	4
5	6	7	8	9	10	11
12	13	14	15	16	17	18
19	20	21	22	23	24	25
26	27	28	29	30	31	

## JUNE

S	M	T	W	T	F	S
						1
2	3	4	5	6	7	8
9	10	11	12	13	14	15
16	17	18	19	20	21	22
23	24	25	26	27	28	29

## JULY

S	M	T	W	T	F	S
	1	2	3	4	5	6
7	8	9	10	11	12	13
14	15	16	17	18	19	20
21	22	23	24	25	26	27
28	29	30	31			

## AUGUST

S	M	T	W	T	F	S
				1	2	3
4	5	6	7	8	9	10
11	12	13	14	15	16	17
18	19	20	21	22	23	24
25	26	27	28	29	30	31

## SEPTEMBER

S	M	T	W	T	F	S
	1	2	3	4	5	6
7	8	9	10	11	12	13
14	15	16	17	18	19	20
21	22	23	24	25	26	27
28	29	30				

## OCTOBER

S	M	T	W	T	F	S
		1	2	3	4	5
6	7	8	9	10	11	12
13	14	15	16	17	18	19
20	21	22	23	24	25	26
27	28	29	30	31		

## NOVEMBER

S	M	T	W	T	F	S
					1	2
3	4	5	6	7	8	9
10	11	12	13	14	15	16
17	18	19	20	21	22	23
24	25	26	27	28	29	30

## DECEMBER

S	M	T	W	T	F	S
	1	2	3	4	5	6
7	8	9	10	11	12	13
14	15	16	17	18	19	20
21	22	23	24	25	26	27
28	29	30	31			



Green Bin and Blue Box Collection WEEKLY (No Limit)



Yard Waste Collection BI-WEEKLY (No Limit)



Garbage Collection Week BI-WEEKLY on your regular day



Christmas tree collection

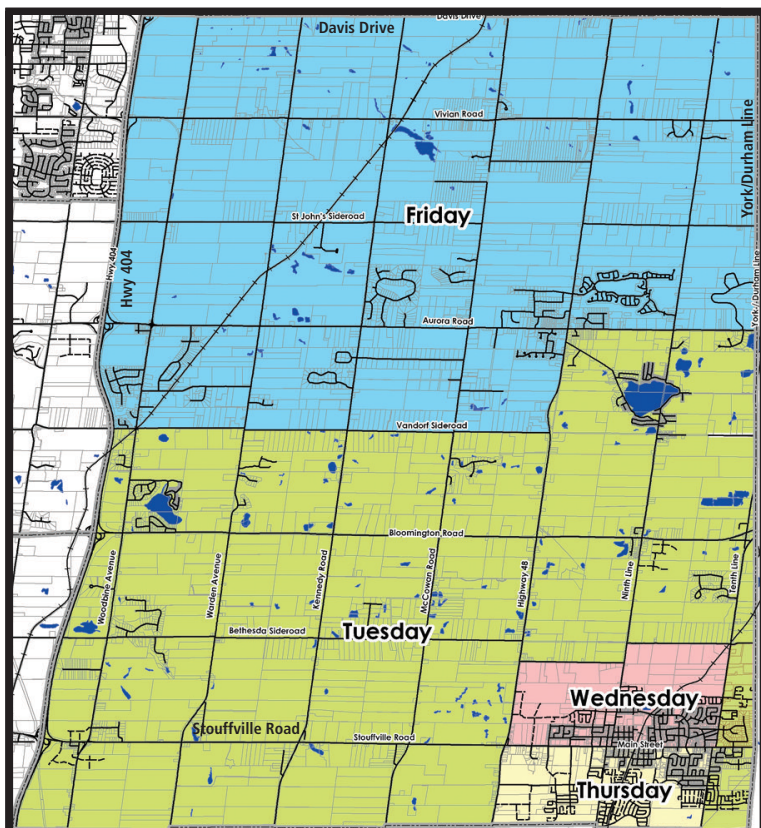


Curbside Giveaway Day

Compost Giveaway Day - May 11

Electronics Recycling Event - May 4/Oct. 5

## Waste Collection Map



## Waste Collection Inquiries

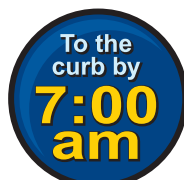
GFL at 1-866-421-5625 or WasteLine@gflenv.com

- Missed collections
- Schedule a metal item pick up
- Broken blue box/green bin exchange
- New resident information

### The Regional Municipality of York

1-866-665-6752 • york.ca/wastedepots

- **Georgina Transfer Station** • 23068 Warden Ave., Georgina
- **Bloomington Yard Waste Depot** • 1351 Bloomington Rd, East, Richmond Hill
- **East Gwillimbury HHW and Recycling Depot** • 225 Garfield Wright Blvd, East Gwillimbury
- **Markham Household Hazardous Waste Depot** • Rodick Rd, south of 14th Avenue, Markham
- **Elgin Mills Community Environmental Centre** • 1124 Elgin Mills Rd., East, Richmond Hill
- **McCleary Court Environmental Centre** • 130 McCleary Court, Vaughan



## TOWN OF STOUFFVILLE

111 Sandiford Drive, Stouffville, ON L4A 0A8  
townofws.ca

