

STOUFFVILLE DAY CAMPS

REGISTRATION OPENS

FEBRUARY 4, 2025

Visit page 36 for all you need to know to get started!



Stouffville

Summer 2025

STOUFFVILLE DAY CAMPS



MAYOR'S MESSAGE

On behalf of Town Council, welcome to the Stouffville Day Camps Guide! Our dedicated programming team has designed an exciting range of camps to suit children of all ages and abilities. We're confident you'll find several options that fit your family's needs and interests. Our incredible Camps team can't wait to welcome all your little adventurers in 2025!

Be well, **Iain Lovatt, Mayor**

Summer 2025 Camps GUIDE CONTENTS

camp details	2
camp locations	3
staff qualifications	4
camp categories	6
recreation	8
swimming & fitness	16
summer planner	21
camps snapshot	22
activity pages	24
19 on the park	28
museum	32
registration info	36
before & after care	38
inclusion support	39
things to know	40
contact info	40
what to bring	44

It's time to begin your 2025 summer adventure with **STOUFFVILLE DAY CAMPS!**

Weeks that camps are available:

	Sun	Mon	Tue	Wed	Thu	Fri	Sat
Week 1	29	30	★ 1	2	3	4	5
Week 2	6	7	8	9	10	11	12
Week 3	13	14	15	16	17	18	19
Week 4	20	21	22	23	24	25	26
Week 5	27	28	29	30	31	1	2
Week 6	3	★ 4	5	6	7	8	9
Week 7	10	11	12	13	14	15	16
Week 8	17	18	19	20	21	22	23
Week 9	24	25	26	27	28	29	30

■ July ■ August ★ Holiday (no camp)

👤 **READY TO REGISTER?**

Registration for Stouffville residents opens **February 4 at 12 noon on townofws.ca/active**

Visit page 36 for all you need to know to get started!

CAMP DETAILS

❤️ **Before and After Care**

Select locations offer Before & After Care for added flexibility. Before care is available 7:30 - 9:00 AM while after care is available from 4:00 - 5:30 PM

❤️ | Look for this symbol to identify which camps offer before and after care!

Flip to page 38 for more information

🕒 **Camp Hours**

Most camps run from 9 AM to 4 PM. Camps at 19 on the Park and the Museum run from 8:30 AM to 4:30 PM, and include a 30-minute drop off and pick up window before and after camp.

📅 **Holidays**

Note that week 1 (June 30 - July 4) and week 6 (August 5-8) are shorter weeks due to holidays.

📋 **Summer Planning**

Browse through our camp schedule and locations to find the perfect fit for your child's interests and your family's schedule.

Flip to page 21 for a Summer Planner that can help you along the way!



Stop on by for a fun-filled afternoon at our **SUMMER CAMP OPEN HOUSE**

Saturday, May 24th, from 10 AM - 1 PM

📍 **Whitchurch-Stouffville Leisure Centre**

Stop on by for a fun-filled day at our Summer Camp Open House! A day designed for parents and campers to connect with our friendly staff, ask questions, and share in the enjoyment of drop-in activities. Get a sneak peek into the exciting summer ahead and secure your child's spot for a memorable season of learning and laughter. See you there!

CAMP LOCATIONS

❤️ Before and after care available at location

Please visit page 36 for important details.

❤️ **Whitchurch–Stouffville Leisure Centre**

2 Park Dr

Whitchurch–Stouffville Museum & Community Centre

14732 Woodbine Ave

19 on the Park

19 Civic Ave

Stouffville Arena

12483 Ninth Line

Stouffville Clippers Sports Complex

120 Weldon Rd

❤️ **Stouffville District Secondary School**

801 Hoover Park Dr

❤️ **Latcham Hall**

8 Park Dr

Lemonville Community Centre

13453 McCowan Rd

Bethesda Sports Fields

6323 Bethesda Rd

Are there certain locations that work better for you than others?

Flip to page 22 for an overview of all camps and their details.

STAFF QUALIFICATIONS AND TRAINING

All Stouffville Camp Staff:

- ✓ Are a minimum of 16 years of age
- ✓ Are certified in Standard First Aid and CPR C
- ✓ Are subject to a Police Vulnerable Sector Screening check
- ✓ Are trained in the High Five Principles of Healthy Childhood Development
- ✓ Receive a full week of on-site training, covering topics like behaviour management, emergency procedures, program planning and communication

Additionally, Aquatic Staff are certified in:

- ✓ National Lifeguard
- ✓ Swim and Lifesaving Instructor

Inclusion Staff receive additional training in:

- ✓ Behaviour Management Systems
- ✓ York Region Summer Camp Inclusion Training

Join our community of hundreds of HAPPY CAMPERS!

2024 Camps Survey Reviews:



"Counsellors are mature, professional, and responsible. Camp theme variety allowed my child to enjoy various camps rather than becoming bored. Locations were convenient and spread nicely across town"

- 2024 Camp Parent/Guardian



"My kids were so happy to attend this camp. The activities were fun, engaging, age appropriate and I appreciated the variety of activities. The staff were super friendly and were able to engage my kids. I would recommend this camp to any and all of my friends and I will be enrolling my kids in this camp again next year, if it's offered. (My kids liked this camp even more than the more expensive camps offered in the area!) Thanks for a great program and a great end to the summer!"

- 2024 Camp Parent/Guardian



"Thank you to the counsellors that ran the camp; they were so nice and involved."

- 2024 Camp Parent/Guardian

HIGH FIVE® TRAINING

HIGH FIVE® Principles of Healthy Child Development (PHCD) is a training that equips front-line leaders with the tools, knowledge, and resources needed to ensure each child's social, emotional, and cognitive needs are met.

Five Principles of Healthy Child Development:

- A caring leader
- The opportunity to make friends
- The opportunity to play
- The opportunity to master skills
- The opportunity to participate



We offer inclusion support!

Discover our commitment to inclusive camps at the Town of Stouffville.

Learn how we ensure accessible experiences for all abilities through our inclusive model, providing 1:1 support.

For more details on inclusion services and how to request support, see page 39.

MEET EMILY!

Camp Coordinator, Summer 2025

Emily has been an invaluable member of the Town of Stouffville team for the past several years.

Alongside her work, Emily has completed her Master's degree in Developmental Psychology and is passionate about supporting children with exceptionalities. Her enthusiasm for summer camp shines through in her ability to develop long lasting and meaningful relationships with participants.



CAMP CATEGORIES

Keep an eye out for the following colour-coded badges beside each camp title!

All of our camps offer a mix of your favourite activities and games.



General

Engage in a diverse range of activities from arts and crafts to games, fostering creativity, teamwork, and fun in a well-rounded program designed for all interests and ages.



Sports & Fitness

Jump into a world of athleticism and skill development, where campers learn various sports, hone techniques, and embrace the spirit of healthy competition in a dynamic and energetic environment.



Arts

Unleash creativity through various mediums—painting, dancing, drama, and music—allowing campers to express themselves while exploring their artistic talents in a supportive and inspiring setting.



Science

Discover the wonders of science through hands-on experiments, exploration, and discovery, igniting curiosity and fostering a deeper understanding of the natural world and scientific principles.



Adventure

Embark on thrilling adventures, including outdoor activities, team-building challenges, and exploration, encouraging campers to step out of their comfort zones and develop resilience and leadership skills.



Swimming

Dive into a world of aquatic fun and safety! Campers enjoy water-based activities, swimming lessons, and games, promoting water confidence and essential swimming skills in a safe and supervised setting.



STOUFFVILLE
DAY CAMPS

RECREATION

AGES 4 & 5 YRS
MINI CAMPERS:
CAMP LEMONVILLE

📍 Lemonville Community Centre

\$280

9:00 AM - 4:00 PM

This camp offers an activity-packed week, focusing on a fun environment while developing social, fine, and gross motor skills. Campers will enjoy arts, dance, games, sing-alongs, crafts, outdoor time, sports, and more. Don't miss out on the fun!

Week	Dates	Code
1*	Jun 30 - Jul 4	35148
2	Jul 7 - 11	35154
3	Jul 14 - 18	35156
4	Jul 21 - 25	35153
5	Jul 28 - Aug 1	35149
6*	Aug 5 - 8	35150
7	Aug 11 - 15	35152
8	Aug 18 - 22	35155
9	Aug 25 - 29	35151

*\$224 for weeks 1 and 6

Note

Mini Camper Ratio

At our Mini Camper programs, we prioritize personalized attention, guidance, and safety, maintaining a dedicated ratio of one counsellor for every eight campers.

AGES 4 & 5 YRS
MINI CAMPERS:
FUN IN THE SUN

📍 Latcham Hall

\$280

9:00 AM - 4:00 PM

♥ Before and after care available* - see page 38 for details

Get ready for an unforgettable camp adventure where fun, creativity, and friendship take centre stage! Our program is packed with excitement, featuring a mix of indoor and outdoor activities like water play, park exploration, and a variety of sports and games. Each day brings something new, with the focus on friends, laughter, and creating unforgettable memories.

*Before and after care available at the Leisure Centre for campers enrolled in this camp. Camp staff will walk those enrolled in before & after care to and from camp each day.

Week	Dates	Code
1*	Jun 30 - Jul 4	35183
2	Jul 7 - 11	35181
3	Jul 14 - 18	35182
4	Jul 21 - 25	35180
5	Jul 28 - Aug 1	35179
6*	Aug 5 - 8	35178
7	Aug 11 - 15	35184
8	Aug 18 - 22	35177
9	Aug 25 - 29	35185

*\$224 for weeks 1 and 6


AGES 6 - 10 YRS
JR. SPORTS CAMP

Leisure Centre
9:00 AM - 4:00 PM

\$280

♥ **Before and after care available** - see page 38 for details

Campers will dive into a fun and active week packed with sports and games designed to boost their skills and foster a passion for staying active. With expert coaching and an emphasis on teamwork, our camp offers an exciting blend of activities that build camaraderie, encourage growth, and celebrate the joy of playing sports in a positive and supportive environment.

Week	Dates	Code
1*	Jun 30 - Jul 4	35168
2	Jul 7 - 11	35170
3	Jul 14 - 18	35171
4	Jul 21 - 25	35172
5	Jul 28 - Aug 1	35173
6*	Aug 5 - 8	35174
7	Aug 11 - 15	35175
8	Aug 18 - 22	35176
9	Aug 25 - 29	35169

*\$224 for weeks 1 and 6

Note**Extended Care**

Only the Leisure Centre, Latcham Hall and SDSS offer extended care. See page 38 for details.



AGES 6 - 10 YRS
STEAM CREATORS CAMP

Stouffville District Secondary School **\$310**
9:00 AM - 4:00 PM

♥ **Before and after care available** - see page 38 for details

Do you like to invent, problem solve, build, and design? This introductory STEAM camp is a great way to discover the world of Science, Technology, Engineering, Arts and Math. Campers will explore their curiosity and creativity in a fun environment, getting hands-on experience with Snap Circuits, MakeDo, Lego, Knex, Ozobots and more!

Week	Dates	Code
2	Jul 7 - 11	35213
3	Jul 14 - 18	35214
4	Jul 21 - 25	35215
5	Jul 28 - Aug 1	35216
6*	Aug 5 - 8	35217
7	Aug 11 - 15	35212

*\$248 for week 6


AGES 6 - 10 YRS
JR. ENTREPRENEUR CAMP

Stouffville District Secondary School **\$280**
9:00 AM - 4:00 PM

♥ **Before and after care available** - see page 38 for details

Unleash your creativity and learn the basics of business at Jr. Entrepreneur Camp. This exciting summer camp for 6-10 year-olds introduces young minds to money management, teamwork, and innovation. Campers will brainstorm product ideas, create their own "business plans," and showcase their projects in a fun, kid-friendly Shark Tank-style pitch event at the end of the week. Perfect for future innovators and leaders!

Week	Dates	Code
2	Jul 7 - 11	35980
3	Jul 14 - 18	35981
4	Jul 21 - 25	35982
5	Jul 28 - Aug 1	35983
6*	Aug 5 - 8	35984
7	Aug 11 - 15	35979

*\$224 for week 6



AGES 6 - 12 YRS
CAMP ON NINTH

Stouffville Arena **\$280**
9:00 AM - 4:00 PM

Welcome to Camp on Ninth – Stouffville's ultimate summer day camp, where each day is filled with adventure, creativity, and fun! Our exciting mix of indoor and outdoor activities offers something for everyone, from new experiences to all-time favourite games and crafts. Campers will enjoy action-packed days, build friendships, and create lasting memories. Join us for a summer of fun, and let the adventure begin at Camp on Ninth.

Week	Dates	Code
1*	Jun 30 - Jul 4	35157
2	Jul 7 - 11	35159
3	Jul 14 - 18	35160
4	Jul 21 - 25	35161
5	Jul 28 - Aug 1	35162
6*	Aug 5 - 8	35163
7	Aug 11 - 15	35164
8	Aug 18 - 22	35165
9	Aug 25 - 29	35158

*\$224 for weeks 1 and 6



AGES 6 - 12 YRS SHARP SKILLS SKATING

📍 **Stouffville Clippers Sports Complex** **\$330**
9:00 AM - 4:00 PM

Have an “ice” summer! This beginner level skating program is designed to introduce basic skating skills. Campers will gain confidence through a variety of games and activities with a focus on skating fundamentals including starting, stopping, balancing and gliding. Off-ice activities include games, crafts and much more.

Week	Dates	Code
2	Jul 7 - 11	35252
5	Jul 28 - Aug 1	35202
8	Aug 18 - 22	35201



AGES 8 - 12 YRS OUTDOOR EXPLORER CAMP

📍 **Bethesda Sports Fields** **\$310**
9:00 AM - 4:00 PM

Calling all outdoor enthusiasts! Get ready for an action packed week of exploring the great outdoors in our Outdoor Explorer Camp! This program is designed for campers who love being outdoors and are ready to dive into nature-based activities every day. Campers will learn from the experts with special sessions led by the Toronto & Region Conservation Authority (TRCA). Each day is filled with exciting hands-on experiences to keep campers engaged, with time for sports and classic camp games throughout the week.

Week	Dates	Code
1*	Jun 30 - Jul 4	35186
2	Jul 7 - 11	35188
3	Jul 14 - 18	35189
4	Jul 21 - 25	35190
5	Jul 28 - Aug 1	35191
6*	Aug 5 - 8	35192
7	Aug 11 - 15	35193
8	Aug 18 - 22	35194
9	Aug 25 - 29	35187

*\$248 for weeks 1 and 6



AGES 8 - 13 YRS TENNIS & PICKLEBALL CAMP

📍 **Stouffville Arena** **\$280**
9:00 AM - 4:00 PM

Join us for our Tennis & Pickleball Camp, designed for beginners and intermediate players looking to improve their skills and have fun! Campers will receive expert instruction, focusing on techniques, strategy, and teamwork. Through engaging drills and friendly matches, participants will build confidence, enhance their game, and enjoy the excitement of these popular racquet sports. Whether you're just starting or looking to take your skills to the next level, this camp is the perfect place to play, learn, and make new friends!

Week	Dates	Code
1*	Jun 30 - Jul 4	35222
2	Jul 7 - 11	35224
3	Jul 14 - 18	35225
4	Jul 21 - 25	35226
5	Jul 28 - Aug 1	35227
6*	Aug 5 - 8	35228
7	Aug 11 - 15	35229
8	Aug 18 - 22	35230
9	Aug 25 - 29	35223

*\$224 for weeks 1 and 6



AGES 8 - 12 YRS JR. FIREFIGHTER CAMP

📍 **Stouffville Clippers Sports Complex** **\$310**
9:00 AM - 4:00 PM

See what it takes to be a firefighter! Campers will learn the basics of fire cause and prevention, fire safety, firefighting equipment and its usage, and the importance of teamwork! This camp operates in partnership with the Town of Whitchurch-Stouffville's Fire & Emergency Services.

Week	Dates	Code
4	Jul 21 - 25	35167


AGES 9 - 13 YRS
BASKETBALL CAMP

Stouffville District Secondary School **\$280**
9:00 AM - 4:00 PM

♥ **Before and after care available** - see page 38 for details

This camp is perfect for the sporty camper, focusing on basketball skill development through a week of on- and off-court training sessions. Our experienced coaches offer personalized instruction in one-on-one and small group settings, helping beginners and intermediate players elevate their game. Campers will also enjoy outdoor activities, visits to the splash pad, and engaging collaborative games throughout the week, ensuring a fun and well-rounded experience.

Week	Dates	Code
5	Jul 28 - Aug 1	35198
6*	Aug 5 - 8	35199
7	Aug 11 - 15	35200

*\$224 for week 6



AGES 9 - 13 YRS
BADMINTON CAMP

Stouffville District Secondary School **\$280**
9:00 AM - 4:00 PM

♥ **Before and after care available** - see page 38 for details

This camp is ideal for the sports enthusiast, with a special focus on badminton. Campers will enjoy a variety of sports activities throughout the session, concentrating on skill development and strategic play in badminton. In addition to honing their skills, participants will engage in outdoor activities, visit the splash pad, and take part in collaborative games and activities, ensuring a fun and active week!

Week	Dates	Code
2	Jul 7 - 11	35195
3	Jul 14 - 18	35196
4	Jul 21 - 25	35197



AGES 9 - 13 YRS
WORLD OF SPORT CAMP

Leisure Centre **\$280**
9:00 AM - 4:00 PM

♥ **Before and after care available** - see page 38 for details

Get ready to explore the exciting World of Sport! This action-packed week will introduce campers to unique sports from around the globe, including the fast-paced game of Tchoukball, the strategic thrill of rugby, the dynamic footwork of sepak takraw, and much more. Each day, participants will learn the rules, techniques, and cultural origins of different international sports while building teamwork, sportsmanship, and new skills. Whether you're an experienced athlete or trying something new, this camp offers a fun and inclusive environment for everyone to discover and enjoy the diverse world of sports!

Week	Dates	Code
1*	Jun 30 - Jul 4	35203
3	Jul 14 - 18	35206
6*	Aug 5 - 8	35209
7	Aug 11 - 15	35210

*\$224 for weeks 1 and 6

Note **Camps Open House - May 24**

Get a sneak peek into the exciting summer ahead and secure your child's spot for a memorable season of learning and laughter. See page 3 for more details.


AGES 13 - 15 YRS
COUNSELLOR IN TRAINING (CIT) CAMP

Stouffville District Secondary School **\$330**
9:00 AM - 4:00 PM

This program focuses on developing the skills required to become an effective camp counsellor and leader in the community. Your child will learn about group dynamics, effective communication strategies, safety and behaviour management and program planning. This program includes one week of learning through hands-on workshops and a one-week volunteer placement where campers will implement what they've learned at one of the Town's day camp programs. CITs will receive a formal evaluation at the end of their placement.

Week	Dates	Code
2 & 3	Jul 7 - 18	35166
7 & 8	Aug 11 - 22	35221





SWIMMING AND FITNESS



AGES 8 - 13 YRS
JUNIOR LIFEGUARD CAMP

Leisure Centre **\$310**
9:00 AM - 4:00 PM

♥ **Before and after care available** - see page 38 for details
Junior Lifeguard Camp provides opportunities to develop leadership skills for the future. Campers will work on swimming strokes, first aid, lifesaving techniques and gain aquatic safety knowledge. There will be an introduction to the new sport of Lifesaving. Additional camp activities will include crafts, songs, and games. Prerequisite: swimming ability - Swimmer 4 and up.

Week	Dates	Code
2	Jul 7 - 11	35265
4	Jul 21 - 25	35266
6*	Aug 5 - 8	35267
8	Aug 18 - 22	35268

*\$248 for week 6



AGES 6 - 12 YRS
SPLASH ADVENTURES

Leisure Centre **\$310**
9:00 AM - 4:00 PM

♥ **Before and after care available** - see page 38 for details
Splash Adventures helps campers cool off from the heat. Campers will have the opportunity to sharpen their strokes and enhance their water safety know-how through daily swim instruction. Swimmers will be placed in multi-level groups which will allow instructors to teach students at various skill levels within the same group. Additional camp activities will include crafts, songs, and games. Recommended next swimming level will be provided at the end of camp.

Week	Dates	Code
1*	Jun 30 - Jul 4	35269
3	Jul 14 - 18	35270
5	Jul 28 - Aug 1	35271
7	Aug 11 - 15	35272
9	Aug 25 - 29	35275

*\$248 for week 1



AGES 10 - 15 YRS SPORTS CONDITIONING CAMP

Leisure Centre
9:00 AM - 4:00 PM

\$310

Before and after care available for campers ages 10-13 years - see page 38 for details

This strength and conditioning camp is designed to improve athleticism and prepare you for your sports season. Great for young athletes from any sport stream (hockey, swimming, baseball, volleyball, basketball, etc.), this camp will focus on improving speed, strength, endurance, balance, and agility. Our staff will utilize the latest dryland training techniques to improve performance in a safe and supportive environment. Other topics included in this camp are: nutrition for performance, injury prevention, leadership and team building.

Week	Dates	Code
2	Jul 7 - 11	35278
4	Jul 21 - 25	35279
6*	Aug 5 - 8	35280
8	Aug 18 - 22	35281

*\$248 for week 6

AGES 8 - 12 YRS JUNIOR FITNESS CAMP

Leisure Centre
9:00 AM - 4:00 PM

\$310

Before and after care available - see page 38 for details

This camp is designed to inspire self-confidence, happiness, and health through movement. Campers will participate in multiple modes of physical activity in a non-competitive environment, including cooperative games, yoga, and nature hikes. Other wellness topics covered include healthy eating habits and strategies to help self-regulate emotions, stress and anxiety.

Week	Dates	Code
1*	Jun 30 - Jul 4	35273
3	Jul 14 - 18	35274
5	Jul 28 - Aug 1	35276
7	Aug 11 - 15	35277

*\$248 for week 1



JOIN OUR TEAM!

Opportunities are available in aquatics, recreation, museum, 19 on the Park, and events!

The Town of Stouffville offers a variety of volunteer and employment opportunities for individuals of all ages and backgrounds.



Whether you're interested in parks, recreation, local theatre, or museum and heritage services, there's a place for you here. With a strong focus on teamwork, innovation, and customer service, Stouffville is a great place to build skills and make a difference in your community.



Learn more about how you can get involved at townofws.ca/volunteer or townofws.ca/careers



COME VOLUNTEER WITH OUR CAMPS THIS SUMMER!

Follow these five easy steps to become a camp volunteer:

1. Visit townofws.ca/volunteer.
2. Create a volunteer account online.
3. Sign up for an interview time slot.
4. Provide a Vulnerable Sector Check (VSC).
5. Complete a volunteer orientation

Volunteers must be at least 14 years of age



2025 CAMPS SNAPSHOT



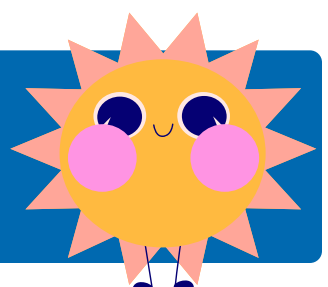
Title	Location	Ages	Week(s) Available	Page #
Mini Campers: Camp Lemonville	Lemonville CC	4 & 5 yrs	1 2 3 4 5 6 7 8 9	9
Mini Campers: Fun in the Sun	Latcham Hall	4 & 5 yrs	1 2 3 4 5 6 7 8 9	9
Jr. Sports Camp	Leisure Centre	6 - 10 yrs	1 2 3 4 5 6 7 8 9	10
STEAM Creators Camp	SDSS	6 - 10 yrs	1 2 3 4 5 6 7 8 9	10
Jr. Entrepreneur Camp	SDSS	6 - 10 yrs	1 2 3 4 5 6 7 8 9	11
Camp on Ninth	Stouffville Arena	6 - 12 yrs	1 2 3 4 5 6 7 8 9	11
Sharp Skills Skating	Clippers Sports Complex	6 - 12 yrs	1 2 3 4 5 6 7 8 9	12
Outdoor Explorer Camp	Bethesda Sports Fields	8 - 12 yrs	1 2 3 4 5 6 7 8 9	12
Tennis & Pickleball Camp	Stouffville Arena	8 - 13 yrs	1 2 3 4 5 6 7 8 9	13
Jr. Firefighter Camp	Clippers Sports Complex	8 - 12 yrs	1 2 3 4 5 6 7 8 9	13
Basketball Camp	SDSS	9 - 13 yrs	1 2 3 4 5 6 7 8 9	14
Badminton Camp	SDSS	9 - 13 yrs	1 2 3 4 5 6 7 8 9	14
World of Sport Camp	Leisure Centre	9 - 13 yrs	1 2 3 4 5 6 7 8 9	15
Counsellor in Training (CIT) Camp	SDSS	13 - 15 yrs	1 2 3 4 5 6 7 8 9	15
Splash Adventures	Leisure Centre	6 - 12 yrs	1 2 3 4 5 6 7 8 9	17
Jr. Lifeguard Camp	Leisure Centre	8 - 13 yrs	1 2 3 4 5 6 7 8 9	17
Sports Conditioning Camp	Leisure Centre	10 - 15 yrs	1 2 3 4 5 6 7 8 9	18
Junior Fitness Camp	Leisure Centre	8 - 12 yrs	1 2 3 4 5 6 7 8 9	18

Drama Camp	19 on the Park	6 - 12 yrs	1 2 3 4 5 6 7 8 9	29
Musical Theatre (2 week)	19 on the Park	6 - 12 yrs	1 2 3 4 5 6 7 8 9	29
Global Grooves	19 on the Park	6 - 12 yrs	1 2 3 4 5 6 7 8 9	29
Page to Stage	19 on the Park	6 - 12 yrs	1 2 3 4 5 6 7 8 9	30
Drama Camp: Shakespeare	19 on the Park	6 - 12 yrs	1 2 3 4 5 6 7 8 9	30
Musical Theatre (1 week)	19 on the Park	6 - 12 yrs	1 2 3 4 5 6 7 8 9	31
And, Scene!	19 on the Park	6 - 12 yrs	1 2 3 4 5 6 7 8 9	31
Kitchen Chaos	WS Museum	6 - 12 yrs	1 2 3 4 5 6 7 8 9	33
Wonder Lab	WS Museum	6 - 12 yrs	1 2 3 4 5 6 7 8 9	33
Fun & Games!	WS Museum	6 - 12 yrs	1 2 3 4 5 6 7 8 9	33
Adventure Awaits!	WS Museum	6 - 12 yrs	1 2 3 4 5 6 7 8 9	34
Museum Master Chef	WS Museum	6 - 12 yrs	1 2 3 4 5 6 7 8 9	34
Artful Antics	WS Museum	6 - 12 yrs	1 2 3 4 5 6 7 8 9	34
Innovation Station	WS Museum	6 - 12 yrs	1 2 3 4 5 6 7 8 9	35
Baking Bonanza	WS Museum	6 - 12 yrs	1 2 3 4 5 6 7 8 9	35
Camp Crafty	WS Museum	6 - 12 yrs	1 2 3 4 5 6 7 8 9	35



REGISTRATION OPENS FEBRUARY 4, 2025 AT 12 NOON

Register for camps by scanning the QR code provided,
or by visiting townofws.ca/active



STOUFFVILLE DAY CAMPS



COLOUR ME!

SUMMER CAMP WORD SCRAMBLE

1 FNSDIRE

2 ERPXLOE

3 UMESMR

4 EMCARP

5 MSUEMU

6 EHTERTA



7 SRPTSO

8 RTA

9 ERNTUEVAD

10 KACABKCP

11 SNU

12 WMNIMISG

13 SFCART

BONUS ROUND

C M A P S I R O E M U N F H I W T S R D I E F N !

Answers: 1. Friends, 2. Explore, 3. Summer, 4. Camper, 5. Museum, 6. Theatre, 7. Sports, 8. Art, 9. Adventure, 10. Backpack, 11. Sun, 12. Swimming, 13. Crafts. Bonus round: Camp is more fun with friends!

TRANSPORTATION CROSSWORD

1. 2. 3. 4. 5. 6. 7. 8. 9. 10.

1.Train 2.Truck 3.Helicopter 4.Plane 5.Car 6.Scooter 7.Taxi 8.Bus 9.Ship 10.Bike

CONNECT THE DOTS!

19 ON THE PARK



AGES 6 - 12 YRS
DRAMA CAMP

19 on the Park
8:30 AM - 4:30 PM

\$248

During this returning favourite, campers will build confidence and let their creativity shine! Drama camp is a fun way for kids to exercise their imagination and advance their oral presentation skills through warm-ups, exercises and performances. This camp will teach children how to act on the stage and will end in an ensemble production.

Week	Dates	Code
1*	Jun 30 - Jul 4	35282

*4-day week


AGES 6 - 12 YRS
MUSICAL THEATRE

19 on the Park
8:30 AM - 4:30 PM

\$510

Love to sing and dance? Bring your talent to Musical Theatre Camp—now running for two weeks! Campers will learn to sing and dance to their favourite musical hits during this returning favourite. Inspired by Broadway, campers will learn how to express themselves through the musical arts.

Week	Dates	Code
2 & 3	Jul 7 - 11 & Jul 14-18	35283


AGES 6 - 12 YRS
GLOBAL GROOVES

19 on the Park
8:30 AM - 4:30 PM

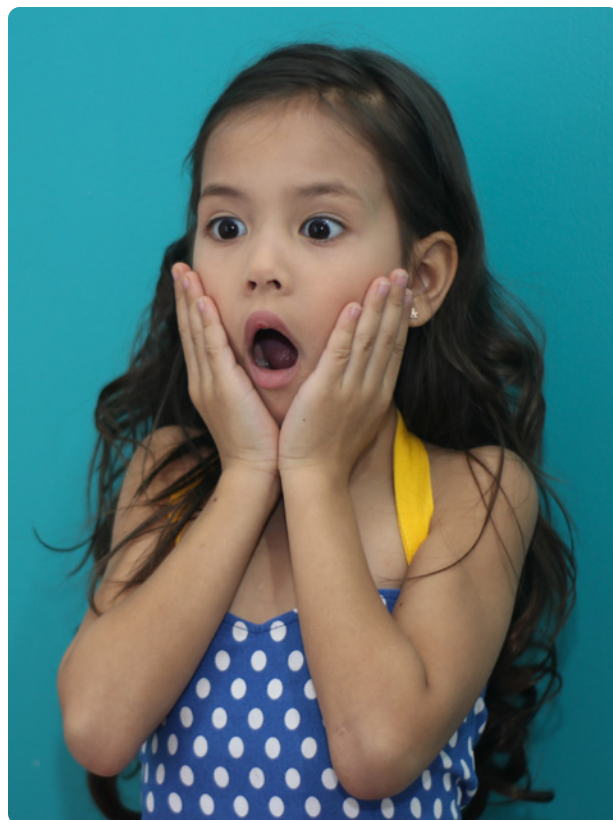
\$310

This week, campers will learn all the ways that people around the world express themselves through dance! Campers will get an introduction to many different types of dance practices through choreographed numbers and exercises. A choreographed performance will close this week!

Week	Dates	Code
4	Jul 21 - 25	35284
8	Aug 18 - 22	35288


Note **Camp Hours**

19 on the Park Camps run from 9:00 AM - 4:00 PM, with drop off between 8:30 AM - 9:00 AM and pick up between 4:00 PM - 4:30 PM.



AGES 6 - 12 YRS
PAGE TO STAGE

📍 19 on the Park
8:30 AM - 4:30 PM

\$310

During this returning favourite, campers will create their own storyboards and practice their creative writing skills to create their own scenes from scratch. Through scriptwriting and set design, campers will develop inspiring plays and work on stage presence and oral presentation skills by performing them live!

Week	Dates	Code
5	Jul 28 - Aug 1	35285

AGES 6 - 12 YRS
DRAMA CAMP: SHAKESPEARE

📍 19 on the Park
8:30 AM - 4:30 PM

\$248

Campers will step back in time this week and explore the worlds inspired by William Shakespeare. It will focus on learning the timeless works of the Bard and how to act on stage for dramatic performances. No Coles Notes necessary for this fun and educational camp!

Week	Dates	Code
6*	Aug 5 - 8	35286

*4-day week



Note
Camp Hours
19 on the Park camps run from 9:00 AM - 4:00 PM, with drop off between 8:30 AM - 9:00 AM and pick up between 4:00 PM - 4:30 PM.

AGES 6 - 12 YRS
AND, SCENE!

📍 19 on the Park
8:30 AM - 4:30 PM

\$310

Make the most of the last week of summer at 19 on the Park! We've listened to the campers all summer long and have packed this week with their favourites from the world of dramatic arts! This week's activities have won the title of Fan Favourites from all other weeks of camp.

Week	Dates	Code
9	Aug 25 - 29	35289



AGES 6 - 12 YRS
MUSICAL THEATRE

📍 19 on the Park
8:30 AM - 4:30 PM

\$310

Back for one week only! Bring your talent to Musical Theatre Camp! Campers will learn to sing and dance to their favourite musical hits during this returning favourite. Inspired by Broadway, campers will learn how to express themselves through the musical arts.

Week	Dates	Code
7	Aug 11 - 15	35287



MUSEUM

AGES 6 - 12 YRS
KITCHEN CHAOS

Whitchurch-Stouffville Museum
8:30 AM - 4:30 PM

\$248

Join us as we cook and bake the days away. It's going to be a 'sweet' week of camp! Campers will learn basic skills, including how to follow a recipe. Additional activities include Museum tours, themed crafts, and outdoor time.

Week	Dates	Code
1*	Jun 30 - Jul 4	35989

*4-day week



Camp Hours

Museum Camps run from 9:00 AM - 4:00 PM, with drop off between 8:30 AM - 9:00 AM and pick up between 4:00 PM - 4:30 PM.

Note

AGES 6 - 12 YRS
WONDER LAB

Whitchurch-Stouffville Museum
8:30 AM - 4:30 PM

\$310

Creativity meets innovation! From experimental art projects to engineering adventures, there's something for everyone! Additional activities include Museum tours, themed crafts, and outdoor time.

Week	Dates	Code
2	Jul 7 - 11	35990

AGES 6 - 12 YRS
FUN & GAMES!

Whitchurch-Stouffville Museum
8:30 AM - 4:30 PM

\$310

Adventure meets strategy! Play every day with board games, card games, sports activities and team challenges. Time for fun and games! Campers will learn various games and will design their own. Additional activities include Museum tours, themed crafts, and outdoor time.

Week	Dates	Code
3	Jul 14 - 18	35991




AGES 6 - 12 YRS
ADVENTURE AWAITS!

Whitchurch-Stouffville Museum **\$310**
8:30 AM - 4:30 PM

Join us for outdoor activities, nature-themed crafts, and explore the wonders of the outdoors. Campers will learn about the Museum's gardens and create their own scavenger hunts. Additional activities include Museum tours, themed crafts, and outdoor time.

Week	Dates	Code
4	Jul 21 - 25	35992


AGES 6 - 12 YRS
MUSEUM MASTER CHEF

Whitchurch-Stouffville Museum **\$310**
8:30 AM - 4:30 PM

Do you have what it takes to be the first Museum Master Chef? Enhance your skills from whisking and stirring, to chopping and measuring. Campers will learn basic skills and create their own recipe using simple ingredients. Additional activities include Museum tours, themed crafts, and outdoor time.

Week	Dates	Code
5	Jul 28 - Aug 1	35993



AGES 6 - 12 YRS
ARTFUL ANTICS

Whitchurch-Stouffville Museum **\$248**
8:30 AM - 4:30 PM

Each day brings thrilling new art projects at this popular creative camp. Campers will have the opportunity to learn new skills, get creative, and use their imaginations. Additional activities include Museum tours, themed crafts, and outdoor time.

Week	Dates	Code
6*	Aug 5 - 8	35994

*4-day week

Note
Camp Hours

Museum Camps run from 9:00 AM - 4:00 PM, with drop off between 8:30 AM - 9:00 AM and pick up between 4:00 PM - 4:30 PM.


AGES 6 - 12 YRS
INNOVATION STATION

Whitchurch-Stouffville Museum **\$310**
8:30 AM - 4:30 PM

We have fun down to a science! Campers will conduct simple experiments, investigate 'how things work', and dream up their own inventions. Additional activities include Museum tours, themed crafts, and outdoor time.

Week	Dates	Code
7	Aug 11 - 15	35995



AGES 6 - 12 YRS
BAKING BONANZA

Whitchurch-Stouffville Museum **\$310**
8:30 AM - 4:30 PM

Have a sweet tooth? Join us for this returning favourite where each day you'll try new recipes! Campers will learn basic skills, while building confidence to follow a recipe. Additional activities include Museum tours, themed crafts, and outdoor time.

Week	Dates	Code
8	Aug 18 - 22	35996


AGES 6 - 12 YRS
CAMP CRAFTY

Whitchurch-Stouffville Museum **\$310**
8:30 AM - 4:30 PM

Let your imagination run wild! Upcycled crafts, artistic masterpieces, and DIY projects provide campers with a fun-filled journey of artistic discovery. Additional activities include Museum tours, themed crafts, and outdoor time.

Week	Dates	Code
9	Aug 25 - 29	35997



READY TO GET STARTED?



Summer Camps

Registration dates

Residents:

Tuesday, February 4, 2025

Online and in-person registration open at 12:00 noon

Non-residents:

Tuesday, February 11, 2025

Online and in-person registration open at 12:00 noon

Non-residents are subject to a 20% surcharge to register in Town programs



REGISTER AT [TOWNOFWS.CA/ACTIVE](https://townofws.ca/active)

- **Have questions or need help with registration?** Call 905-642-PLAY (7529)
- **Looking for fee subsidies?** Visit townofws.ca/register for help in supporting your family's active lifestyle.
- **Everyone needs a login for access to register.** Create a login by completing the Online Account Form at townofws.ca/register, and emailing it to leisure.services@townofws.ca along with proof of Stouffville residency.



Quick tip!

To speed up your family's registration, activate your family's account before registration opens on February 4th. Once you apply, we will have your account ready for you within 48 hours.

Withdrawing from Camp

Withdrawal requests must be received in writing at least seven (7) days prior to the first day of camp. Credits/refunds will not be issued after the start of camp unless there are extenuating circumstances. Withdrawal requests may be submitted by email or in person at the Leisure Centre using the Program Withdrawal Form. Refunds will not be granted for camp days missed due to illness, vacation, personal emergency, inclement weather, or closures due to unforeseen maintenance issues. **A \$27 administrative fee will apply to any camp withdrawals.**

BEFORE AND AFTER CARE

Extended care is available at our **Leisure Centre, Latcham Hall*** and **Stouffville District SS locations.**

Be sure to register for extended care at the same location where your child is enrolled in camp. When selecting extended care, ensure that the timing aligns with your child's camp schedule.



Before Care

7:30 - 9:00 AM
\$32/4-day week
\$40/5-day week

After Care

4:00 - 5:30 PM
\$32/4-day week
\$40/5-day week



Look for this symbol throughout the guide to identify which camps offer before and after care!

*Campers enrolled in Mini Campers: Fun in the Sun at Latcham Hall should register for this before & after care location (campers will be walked to and from camp each day by camp staff).

Leisure Centre / Latcham Hall

Week	Before Care	Cost	After Care	Cost
1*	35140	\$32	35127	\$32
2	35145	\$40	35126	\$40
3	35141	\$40	35128	\$40
4	35142	\$40	35129	\$40
5	35144	\$40	35125	\$40
6*	35137	\$32	35122	\$32
7	35138	\$40	35123	\$40
8	35139	\$40	35124	\$40
9	35143	\$40	35130	\$40

*4 - day week

Stouffville District Secondary School

Week	Before Care	Cost	After Care	Cost
2	35133	\$40	35118	\$40
3	35134	\$40	35119	\$40
4	35135	\$40	35120	\$40
5	35132	\$40	35117	\$40
6*	35131	\$32	35116	\$32
7	35136	\$40	35121	\$40

*4 - day week

INCLUSION SUPPORT AT CAMP

The Town of Stouffville is committed to ensuring our camps are inclusive and welcoming to meet the diverse needs of individuals of all abilities.

For more information about inclusion services, please contact our camp office: inclusion@townofws.ca



How to request an Inclusion Support Staff:

1. Fill out an Inclusion Camper Profile form online.
2. Our camp coordinator will reach out to discuss information on the form.
3. Camp coordinator will assist with the registration process and scheduling 1:1 support.
4. Our staff team will be happy to set up facility tours, information sessions, and staff meet and greets prior to the start of camp.

Questions? Contact our camp office via email at inclusion@townofws.ca or by phone at (905) 642-7529 ext. 5300

The deadline to fill out and submit an Inclusion Camper Profile form is **June 2, 2025**. After the deadline has passed, you may still be able to apply; we will do our best to find support but it is not guaranteed.

How do I know if additional support is required?

Extra support may be required for camp participation if:

- Extra support is required at school in the classroom.
- A physical, development, and/or learning disability exists.
- Extra support is needed at home for basic care (toileting, feeding, changing, etc).
- Participant has a safety plan in place with their educational institution.

Families who do not disclose the needs of a participant before registration may be required to withdraw from the program. The Town of Stouffville refund policy will apply.



Ready to request services?

Request inclusion support by scanning here, or by visiting townofws.ca/inclusionsupport

THINGS TO KNOW



Contact Information

Recreation Camps
(905) 642-PLAY (7529), ext. 5300
camps@townofws.ca

Swimming Camps
(905) 642-PLAY (7529), ext. 5329
iwona.dexavier@townofws.ca

Fitness Camps
(905) 642-PLAY (7529), ext. 5325
craig.baillie@townofws.ca

Museum Camps
(905) 727-8954
wsmuseum@townofws.ca

19OTP Camps
(905) 640-2322
19onthepark@townofws.ca

Camp Hours and Extended Care

- Camp hours vary based on location. Extended care is available at certain locations for an additional cost.
- Before Care runs from 7:30 AM – 9:00 AM and After Care runs from 4:00 PM – 5:30 PM.

Sign In & Out Procedures, Safe Arrival and Dismissal

All parents/guardians are required to sign their child in and out of camp daily. Only individuals who are listed on the designated camper pick up list will be able to pick up campers. Photo ID will be required at each pick up.

Medication

If a participant is required to take medication, please ensure you indicate this through the custom questions upon registration. You will then need to follow the procedure below:

1. All medications must be in their original bottle with the child's name clearly indicated and dosage.
2. Only send the correct dose for the day.
3. Campers must self-administer their medication with staff supervision.

Anaphylaxis and Epi-Pens

If your child requires the administration of an Epi-Pen, please ensure you indicate this through the custom questions upon registration. Participants who require Epi-Pens are responsible for ensuring that they have their Epi-Pens with them while attending camp. Epi-Pens must be carried by the participant, in a waist pack that is easily identifiable. Campers must self-administer their Epi-Pen with staff supervision.

Behaviour Guidelines

The Town of Stouffville is committed to ensuring a safe and inviting environment for all participants in our recreation programs, including summer camps. Parents/guardians will be notified if behaviour expectations are not being met and will be asked to help create an action plan to address the behaviour(s). Serious behaviours are classified as those that compromise the immediate safety of oneself, staff, volunteers, and other participants. These will require immediate action from camp staff to ensure the safety and quality of programs provided.

Behaviour Colour Chart

Yellow

Action:

Bringing electronics to camp, being disrespectful to staff or another camper, taking something that is not theirs.

Result:

Verbal warning given to camper.

Orange

Action:

Bullying (repetitive unwanted actions towards another person), acting with inappropriate intentions, deliberately putting self or others at risk.

Result:

Phone call home to parent/guardian.

Red

Action:

Physical bullying, threats, bringing weapons to camp, stealing from another camper.

Result:

Parent/guardians will receive a call and camper will be sent home for a period of 24 hours. Depending on the severity of the situation, police may be called and the camper removed from camp.



Sun Safety

Campers are required to wear sunscreen and hats when outdoors. Campers should arrive with sunscreen already applied. Staff will provide time throughout the day for re-application of sunscreen.

Inclement Weather & Heat Alerts

All camps will continue during inclement weather and heat alerts, however activities may be modified to be low-energy, and outdoor activities will take place in the shade whenever possible, to limit campers' exposure to the sun. Additional water breaks will also be added. Please dress your campers appropriately for the weather.



Join us for a summer packed with adventure, learning, and creativity!

From robotics and engineering to dinosaurs and space exploration, campers will engage in hands-on activities designed to ignite curiosity and foster new skills. Full-day camps run from 9:00 AM to 4:00 PM.

Pricing

5 day \$360 4 day \$288 3 day \$216

- | | |
|------------------|---------------|
| 1 Jul 2 - Jul 4 | 6 Aug 5 - 8 |
| 2 Jul 7 - 11 | 7 Aug 11 - 15 |
| 3 Jul 14 - 18 | 8 Aug 18 - 22 |
| 4 Jul 21 - 25 | 9 Aug 25 - 29 |
| 5 Jul 28 - Aug 1 | |

Visit wsplibrary.ca or contact us at 905-642-7323 or info@wsplibrary.ca

AGES 4 - 7 YRS

JUNIOR CAMPS BY IDEA LAB KIDS

Week / Camp Name / Code

- 1 Jr. RoboBuilders: Robotics (code: 35232)
- 2 FUNdamentals of Engineering (code: 35232)
- 3 Jurassic Explorers: Dino Discoveries (code: 35232)
- 4 Artful Engineers: Igniting Innovation (code: 35232)
- 5 Space Explorers: Astronomy 101 (code: 35232)
- 6 Jr. RoboBuilders: Robotics (code: 35232)
- 7 Imagination in Motion (code: 35232)
- 8 Jr. Doctors in Training (code: 35232)
- 9 STEAM Explorers Jr. (code: 35232)

AGES 8 - 13 YRS

SENIOR CAMPS BY IDEA LAB KIDS

Week / Camp Name / Code

- 1 CodeCamp: Intro to Programming (code: 35241)
- 2 EV3 Mindstorm Builder: Robotics (code: 35242)
- 3 Motion Makers: Engineering Adventures (code: 35243)
- 4 Design & Develop Your Roblox World (code: 35244)
- 5 Sr. Doctors in Training (code: 35245)
- 6 FUNdamentals of Engineering (code: 35246)
- 7 Game Design Using Python (code: 35247)
- 8 Sr. Inventors: Engineering Lab (code: 35248)
- 9 STEAM Explorers Sr. (code: 35249)



Hogwarts Camp awaits! Join us for a magical week of spells, potions, and house adventures!
Code: #35115



Looking for a fun, creative and inspiring experience for your child this summer? We've got it!

Latcham Art Centre offers 7 weeks of Summer Art Camp in a bright, beautiful and spacious studio during the months of July and August. It is a fantastic opportunity for children and youth to explore their imagination, get creative and make new friends in a safe, inclusive and fun environment!

Each Art Camp week is different, taught by an artist-educator and there will be a variety of exciting art projects including painting, drawing, sculpting, and more! Students are also given a tour of the current exhibition in our gallery space. At the end of every Friday, to celebrate all the students' hard work and dedication during the week, there will be an art show in the studio for family and friends to enjoy!

Visit latchamartcentre.ca or contact us at 905-640-8954 info@latchamartcentre.ca

Register at www.latchamartcentre.ca/programs

CAMP WEEKS

\$375

- 1 July 7 - 11 (Ages 5 - 11)
- 2 July 14 - 18 (Ages 5 - 11)
- 3 July 21 - 25 (Ages 5 - 11)
- 4 July 28 - August 1 (Ages 5 - 11)
- 5 August 5 - 8 • Stop-Motion Animation Camp! (Ages 12-17)
- 6 August 11 - 15 (Ages 5 - 11)
- 7 August 18 - 22 (Ages 5 - 11)









Drop-off is between 8:30 AM - 9:30 AM and Pick-up is between 4:00 PM - 4:30 PM.

Students are to bring 2 nut-free snacks and lunch, a bottle of water, sunscreen, a hat and an extra change of clothing just in case.

Stouffville Library and Latcham Art Centre camps are independently operated and may follow different policies and procedures than those outlined in this guide.

WHAT TO BRING WITH YOU TO CAMP

Each day, campers should come prepared with:

-  a nut-free lunch, along with snacks and drinks
-  a reusable water bottle
-  sunscreen
-  a hat and suitable outdoor clothing
-  closed-toe shoes (sandals and Croc-style shoes are not suitable for our outdoor or indoor adventures!)
-  younger campers should bring an additional change of clothes

Note

Please clearly label all belongings. Please leave toys, electronics, and valuable items at home. Camp facilities and staff are not responsible for lost, damaged or stolen personal items.



STOUFFVILLE DAY CAMPS

GET READY TO TAKE SUMMER FUN TO A WHOLE NEW LEVEL!

**STOUFFVILLE
DAY CAMPS**

REGISTRATION OPENS AT 12 NOON ON
FEBRUARY 4, 2025



Register for camps by scanning,
or at townofws.ca/active

*Memberships, activities, and programs are subject to HST. Non-residents are subject to a 20% surcharge to register in Town of Whitchurch-Stouffville programs.

